

SuperStudio 2020



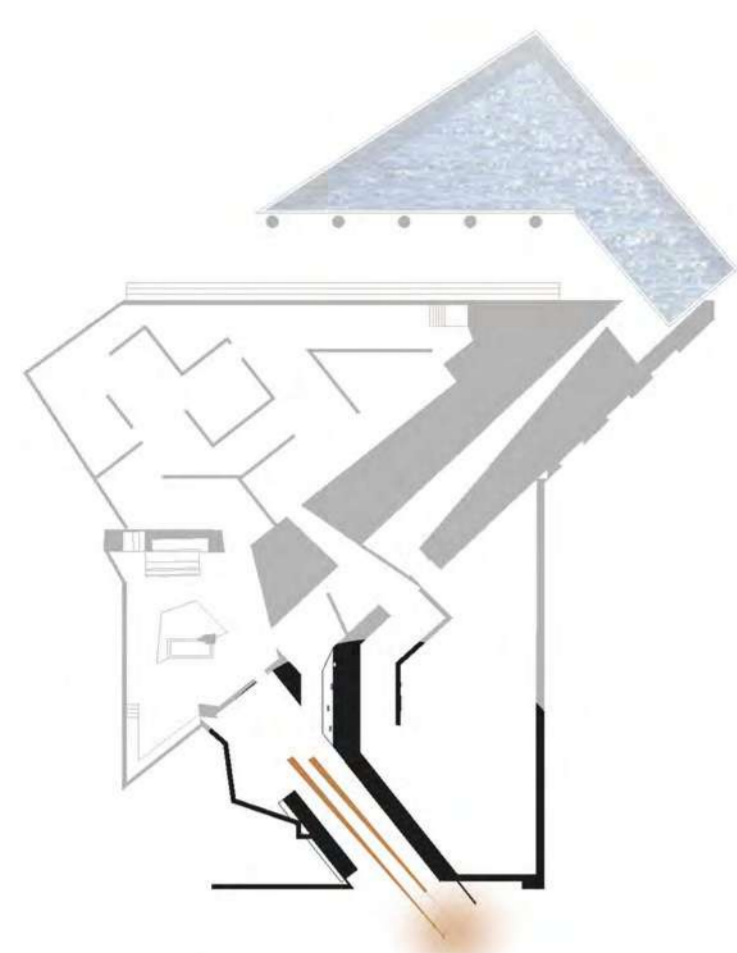
ةدوق فمرلا تايوهلا حانج

The Pavilion of Lost Identities

As 2020 marks a decade of the ongoing war in Syria. The stories of the last stages of the continuing war could be eclipsed by the other grim news of the events this year. 'The pavilion of lost Identities' is a homage to the struggles of people in Syria. With around a million refugees finding refuge in Europe, the pavilion is meant to be an installation for the Venice Biennale.

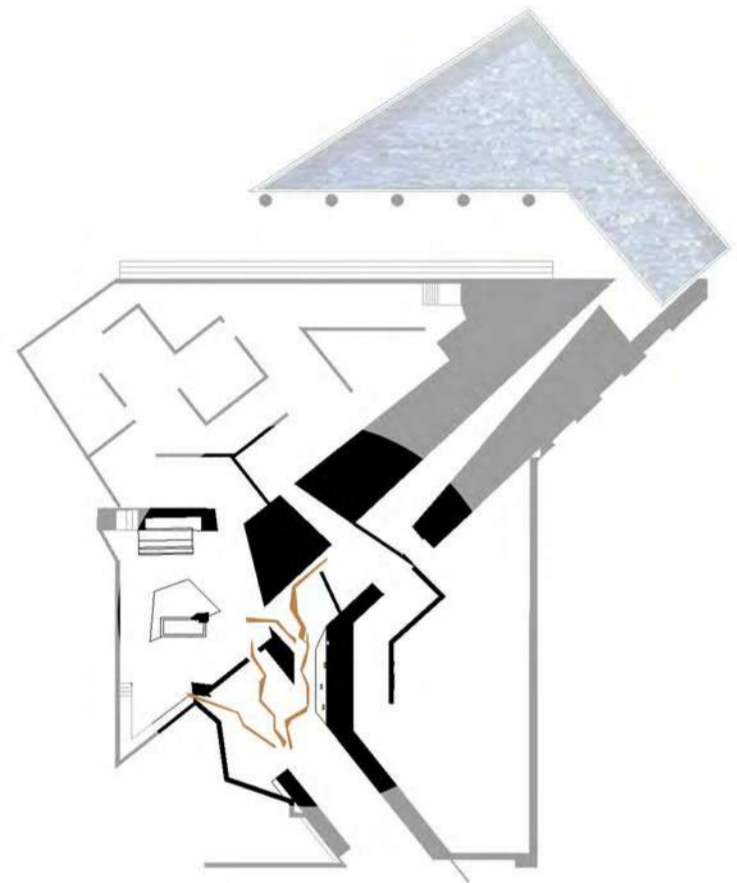
The pavilion empathizes with their struggles and their hope to normalcy. And seeks to capture the journey of war victims. The spatial allegories of the journey embody 5 stages of their story-

Beginning, Dilemma, Struggle, Reconditioning and Renewal.



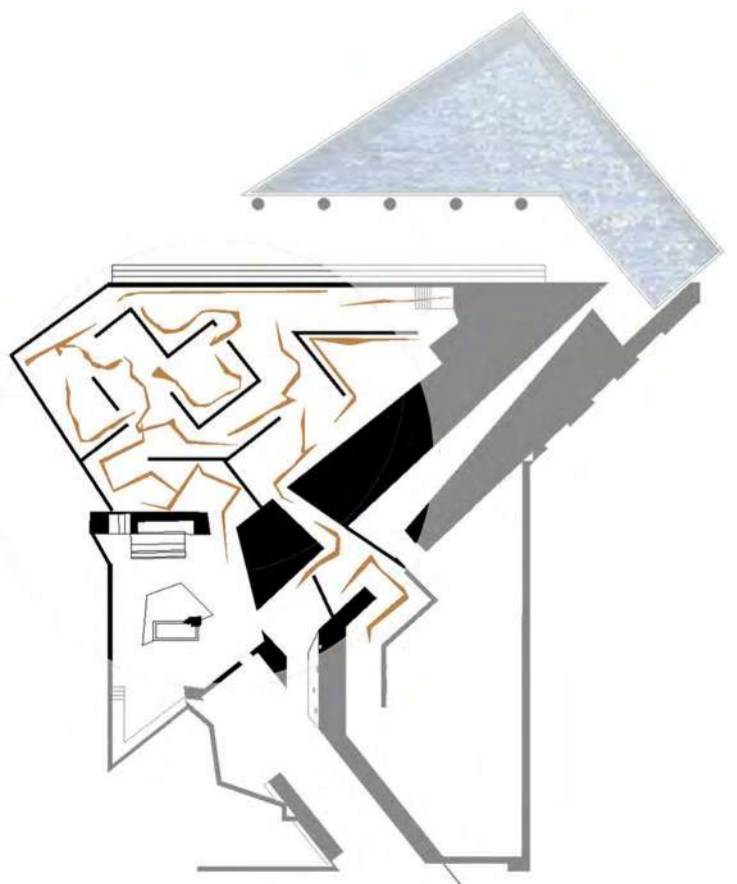
BEGINNING

Her journey **Begins** into the pavilion.



DILEMMA

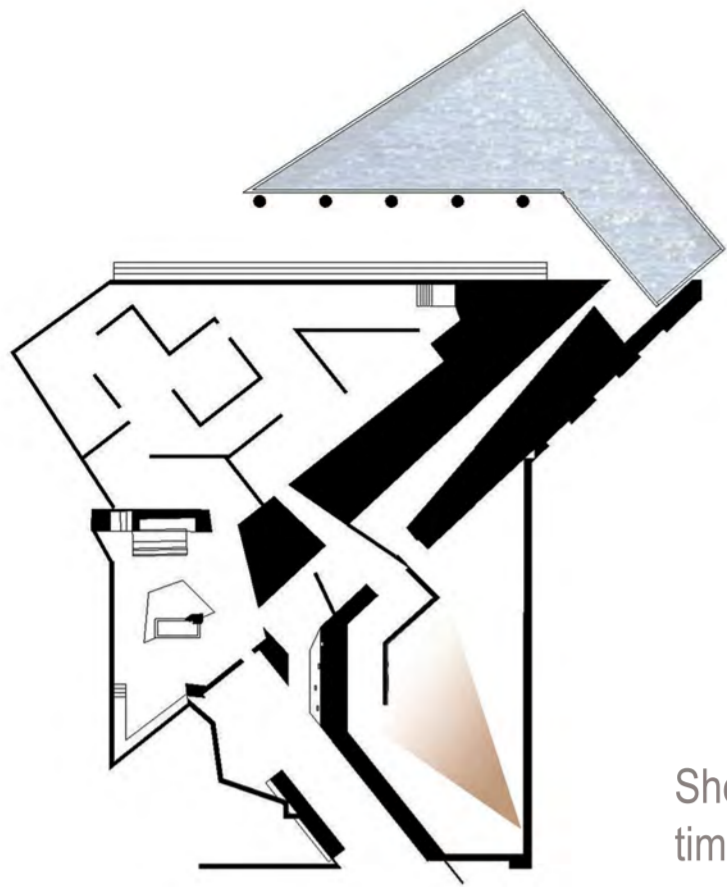
Few steps down the trail she faces a **Dilemma**. There are paths to choose and she has to make hard choices. The Protagonist does not know where each of the paths will lead her to.



STRUGGLE

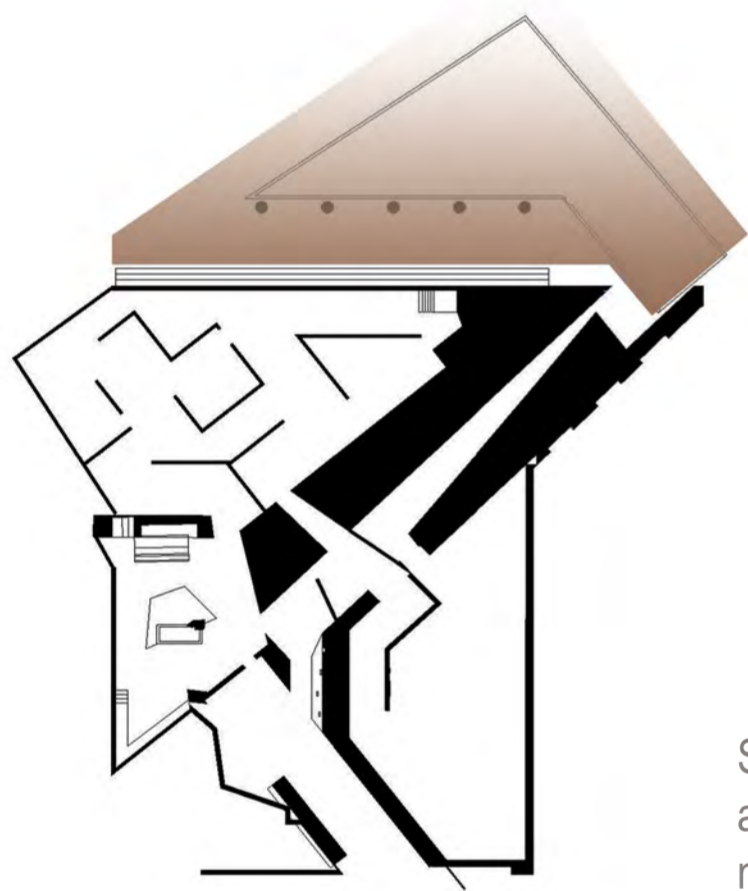
She enters a labyrinth of arches and **Struggles** to find her way. The fear of being lost escalates. She grapples to face the truth and looks back on her journey.





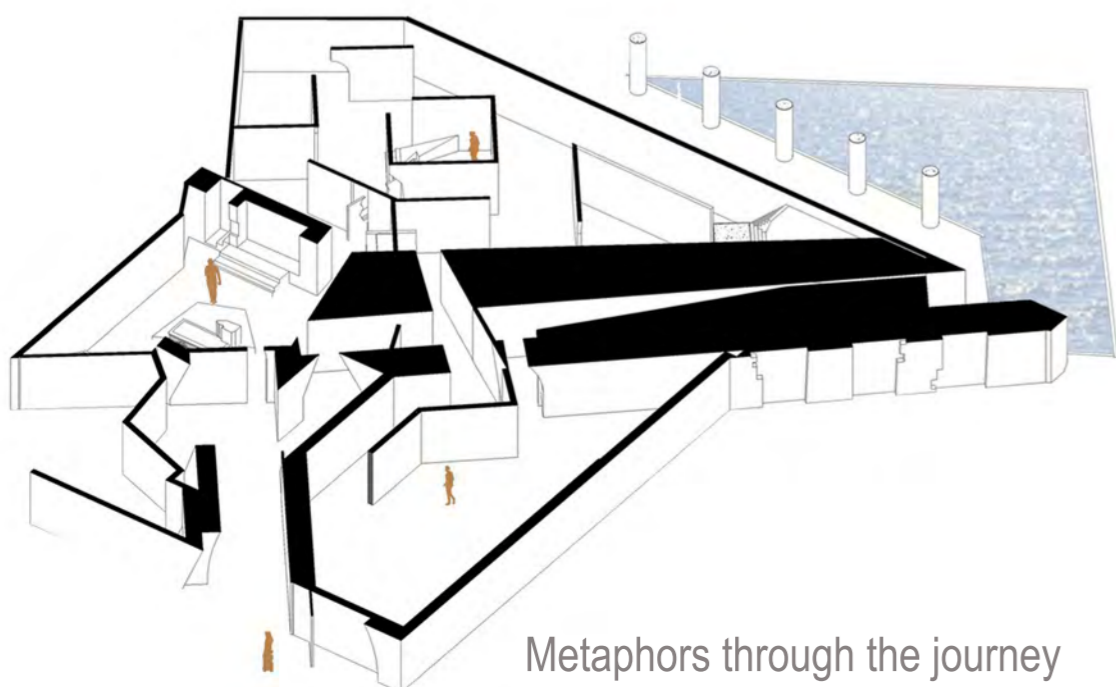
RECONDITIONING

She finds hope and **Reconditions** with time. She takes the long arduous road to normalcy. She notices dichotomy of old rubble and White Concrete.

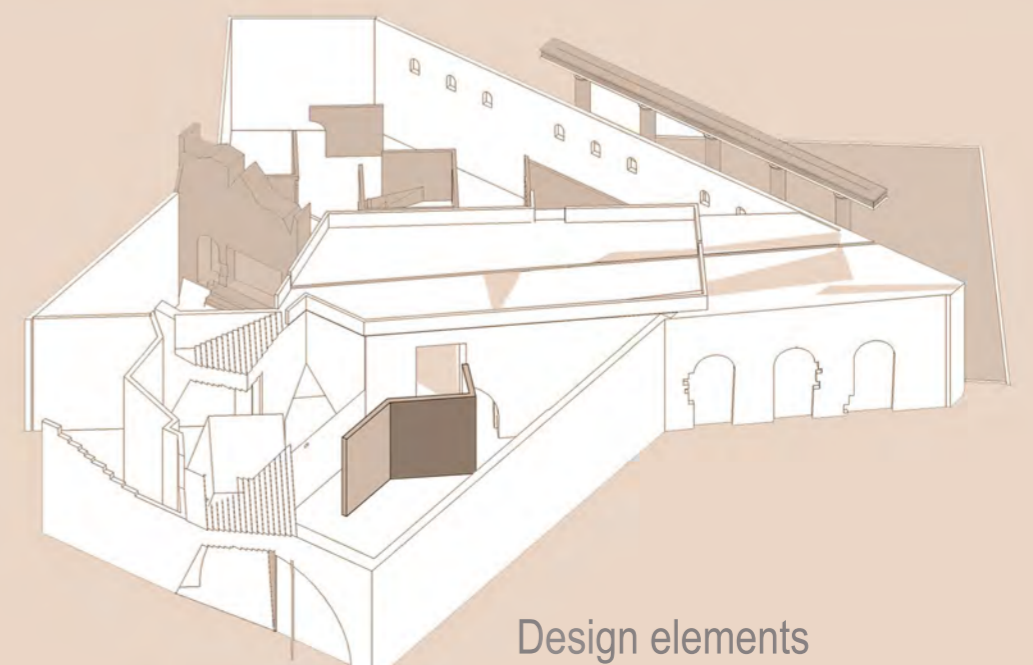


RENEWAL

She comes out of the pavilion and finds an Oasis. The columns and edifices are no longer shattered. There are no voices in her head. She is at peace. She is **Renewed**.



Metaphors through the journey



Design elements





The Pavilion of Lost Identities

As 2020 marks a decade of the ongoing war in Syria. The stories of the last stages of the continuing war could be eclipsed by the other grim news of the events this year. 'The pavilion of lost Identities' is a homage to the struggles of people in Syria. With around a million refugees finding refuge in Europe, the pavilion is meant to be an installation for the Venice Biennale.

The pavilion empathizes with their struggles and their hope to normalcy. And seeks to capture the journey of war victims. The spatial allegories of the journey embody 5 stages of their story- Beginning, Dilemma, Struggle, Reconditioning and Renewal.

*Her journey **Begins** into the pavilion,
Few steps down the trail she faces a **Dilemma**,
There are paths to choose and she has to make hard choices,
The Protagonist does not know where each of the paths will lead her to,
She enters a labyrinth of arches and **Struggles** to find her way,
The fear of being lost escalates,
She grapples to face the truth and looks back on her journey,
She finds hope and **Reconditions** with time,
She takes the long arduous road to normalcy,
She notices dichotomy of old rubble and White Concrete,
She comes out of the pavilion and finds an Oasis,
The columns and edifices are no longer shattered,
There are no voices in her head. She is at peace,

She is **Renewed**.*

*By - Anali Dsouza
Anish Mistry
Keneil Jiwan
Pratyush Munjal*