

NEWCASTLE
ARCHITECTURE
AWARDS
2022



National
Architecture
Awards



Australian
Institute of
Architects

NEWCASTLE ARCHITECTURE AWARDS 2022

CONTENTS

NEWCASTLE

ARCHITECTURE

AWARDS

6	NEWCASTLE ARCHITECTURE MEDAL 2022	22	COMMENDATION FOR INTERIOR ARCHITECTURE
8	COLORBOND® AWARD FOR STEEL ARCHITECTURE	24	COMMENDATION FOR SMALL PROJECT ARCHITECTURE
10	AWARD FOR COMMERCIAL ARCHITECTURE	26	COMMENDATION FOR HERITAGE
12	COMMENDATION FOR COMMERCIAL ARCHITECTURE	28	AWARD FOR URBAN DESIGN
14	AWARD FOR EDUCATIONAL ARCHITECTURE	30	COMMENDATION FOR URBAN DESIGN
16	AWARD FOR INTERIOR ARCHITECTURE	32	AWARD FOR PUBLIC ARCHITECTURE
18	AWARD FOR INTERIOR ARCHITECTURE	34	AWARD FOR RESIDENTIAL ARCHITECTURE – MULTIPLE HOUSING
20	COMMENDATION FOR INTERIOR ARCHITECTURE	36	AWARD FOR RESIDENTIAL ARCHITECTURE – HOUSES (NEW)

COVER IMAGE: NEWCASTLE EAST END, STAGE 1
SJB, DURBACH BLOCK JAGGERS & TONKIN ZULAIKHA
GREER | PHOTOGRAPHY: TOM ROE

THE AUSTRALIAN INSTITUTE OF ARCHITECTS THANKS THE PARTNERS AND SUPPORTERS OF THE 2022 NEWCASTLE ARCHITECTURE AWARDS.

Major Event Partner



Major National Partners



National Corporate Partners



Supporting Partners



National Insurance Partner



National Media Partner



FROM THE REGIONAL DIVISION COMMITTEE CO-CHAIR



PHOEBE GLANVILLE
ALLEANZA ARCHITECTURE

The Newcastle Architecture Awards include architecture throughout Newcastle, and the Central Coast region and are an important fixture in the Australian Institute of Architects Awards program.

The Newcastle Architecture Awards is a great opportunity to promote and recognise architects and architecture outside of major capital cities. It is vital to the region's growth and development that we demonstrate and showcase the diverse and exceptional architecture in the region. It provides a platform for public and peer recognition of the outstanding and innovative works ranging from small to large-scale projects.

I would like to thank and acknowledge the commitment of the Awards Jury; Lindsay Johnston (Jury Chair), Murray Wood and Kalyna Sparks, who visited all the projects over a three-day period.

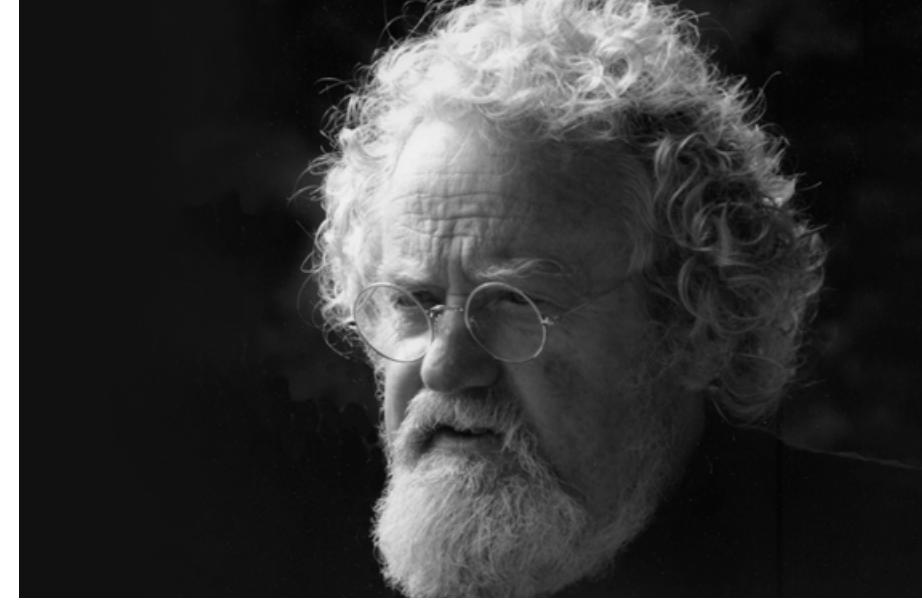
A task that is both challenging and time consuming, yet ultimately rewarding through a detailed exposure of the projects and an opportunity for both clients and architects to present directly to the jurors in the context of the buildings themselves.

As we venture into the third year of a global pandemic, I must make note of the ever-changing landscape and influences that this is having on our workplace and construction industry.

Although we had a lower number of submissions this year, the quality was high throughout all the categories. Higher numbers in the Urban Design, Multi-residential and Education categories reflect the Hunter's growth, changing demographics and community needs.

On behalf of the Regional Division for the Institute, I would like to thank everyone who has submitted a project and congratulate those recognised within the 2022 Newcastle Architecture Awards and thank you to all our members for their ongoing support.

FROM THE JURY CHAIR



LINDSAY JOHNSTON
ARCHITECTURE FOUNDATION AUSTRALIA

It has been a pleasure to join with my jury colleagues – Kalyna Sparks and Murray Wood – to judge the 2022 Newcastle Architecture Awards. We visited every entry located in Newcastle, Hunter Valley, Lake Macquarie, Port Stephens, the Mid-North Coast and the Central Coast.

There are many facets to assessing design excellence, which encompass response to the clients' brief – what Vitruvius described as 'firmness, commodity and delight' – and the consideration of culture, context, place, climate and environmental performance – and the ability to enrich life.

We viewed a diverse range of projects ranging from major urban developments, restorations and architectural repurposing, through to intimately crafted smaller buildings, houses and interiors.

My role as Jury Chair has been to invite diverse views from the other jurors and to reach

consensus, which was sometimes the basis or robust discussion. Of major importance has been the ability for the architects to develop a good relationship with the project clients, whether private homemakers, business owners, commercial developers or public authorities, and to bring together results that hold true to the clients' aspirations, while negotiating the criteria of local planning authorities.

Thank you to all the clients who had the wisdom to engage good architects, and to those clients who generously welcomed us to view their buildings. Thank you and well done to all the architects who submitted their projects. Often, it is only we architects who can appreciate the effort and commitment that is involved in seeing these projects through to realisation.

Well done to everyone.

JURY 2022



MURRAY WOOD
MAITLAND CITY COUNCIL



KALYNA SPARKS
DAVID BOYLE ARCHITECTS



NEWCASTLE ARCHITECTURE MEDAL 2022

**NEWCASTLE EAST END
STAGE 1**

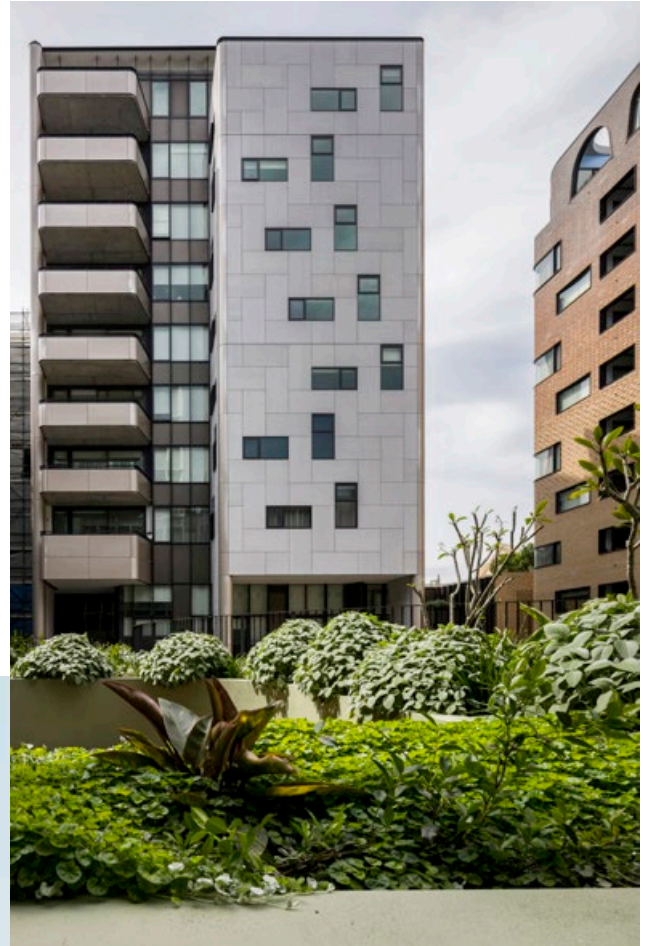
**SJB
DURBACH BLOCK JAGGERS
& TONKIN ZULAIKHA GREER**

The jury decided to award the Newcastle Medal to the Stage 1 Newcastle East End development, as it is a quite special project, significant as a model, applicable across other cities in Australia, and elsewhere, due to its unique design and procurement approach.

It is unusual to have three accomplished architectural practices working collaboratively, and that the developer was prepared to follow the advice of the lead consultants SJB, who saw the wisdom in participating with others, in what is the first stage of a, potentially, four stage development program of four complete city blocks.

The jury hopes that by making this prestigious award to this project, it will reinforce the potential to keep going with this procurement process for the other urban blocks along Hunter Street in east Newcastle, and will encourage other developers and city authorities – and architectural practices – to consider this collaborative approach as a modus operandi for urban renewal.

Again, congratulations to SJB, Durbach Block Jaggers and Tonkin Zulaikha Greer. Again, most of all congratulations to the developers Iris Capital.



COLORBOND® AWARD FOR STEEL
ARCHITECTURE

CATHERINE McAULEY
CATHOLIC CHAPEL

WEBBER ARCHITECTS

The bold regular form of the chapel with its transparent corner elements is defined by the steel truss frame, both visible externally as a frame for the perforated shading screens and internally as a feature within the congregation space.

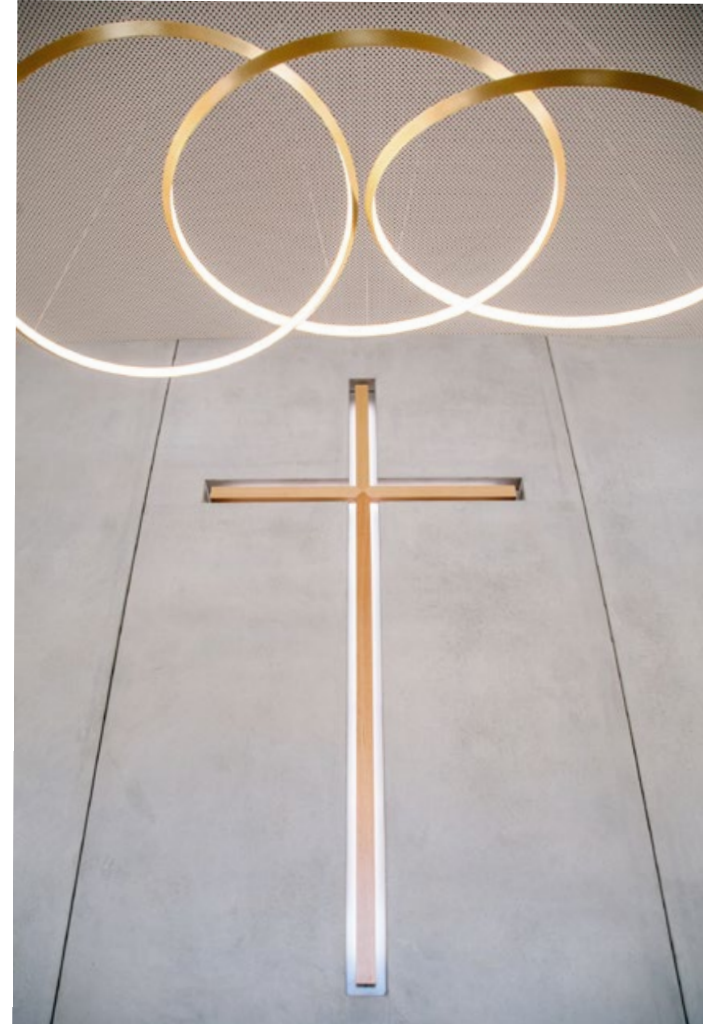
The architectural expression of this dramatic large column-free span over the chapel relies closely on the structural capabilities of COLORBOND® Steel.

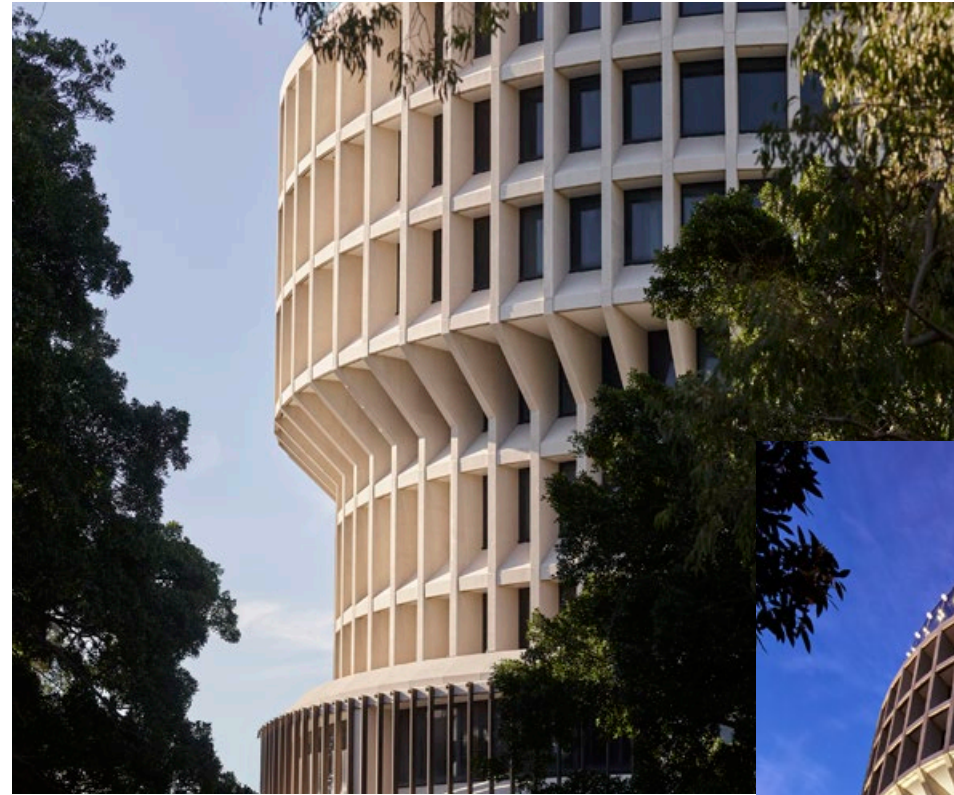
In addition to the steel framing the simple horizontal roof form is emphasised through the use of a finely detailed folded standing seam roof edge that reflects the new Catholic community's strength.

This fine-edge detailing combined with a large white floating roof creates a strong identity from the street and forms an integral part of the ecclesiastical symbolism of the building.



PHOTOGRAPHY: GREY GRIFFIN





AWARD FOR COMMERCIAL ARCHITECTURE

**KINGSLEY BY
CRYSTALBROOK
COLLECTION**

EJE ARCHITECTURE

Any alteration to this well-loved brutalist monument of the 1970s was going to be contentious among Novocastrians and our local community of practitioners. Nevertheless, EJE Architecture has seamlessly bridged the fine balance of restoring an historic building in the round as well as adaptively transforming the ex-administration building into Newcastle's first luxury five-star hotel.

The glass encased rooftop connects for the first time the view over the city, and to the heads beyond, creating a unique food and beverage experience with considered materials and furnishings throughout.

The clever use of moulded ceiling soffits and mirrored panels in the lobby pay homage to the ever-present cylindrical building form and volume. Every effort has been made to make the rooms feel spacious and peaceful and fit-outs have become joinery items allowing the architecture to flourish around them.

Kingsley now enters a new chapter of its life from an industrial concrete structure into a futuristic vision of contemporary architecture, effectively contributing to the metamorphosis of the civic precinct.

PHOTOGRAPHY: BARNEY COLLINS / NIC GOSSAGE / NATHEN DAWES



COMMENDATION FOR COMMERCIAL ARCHITECTURE

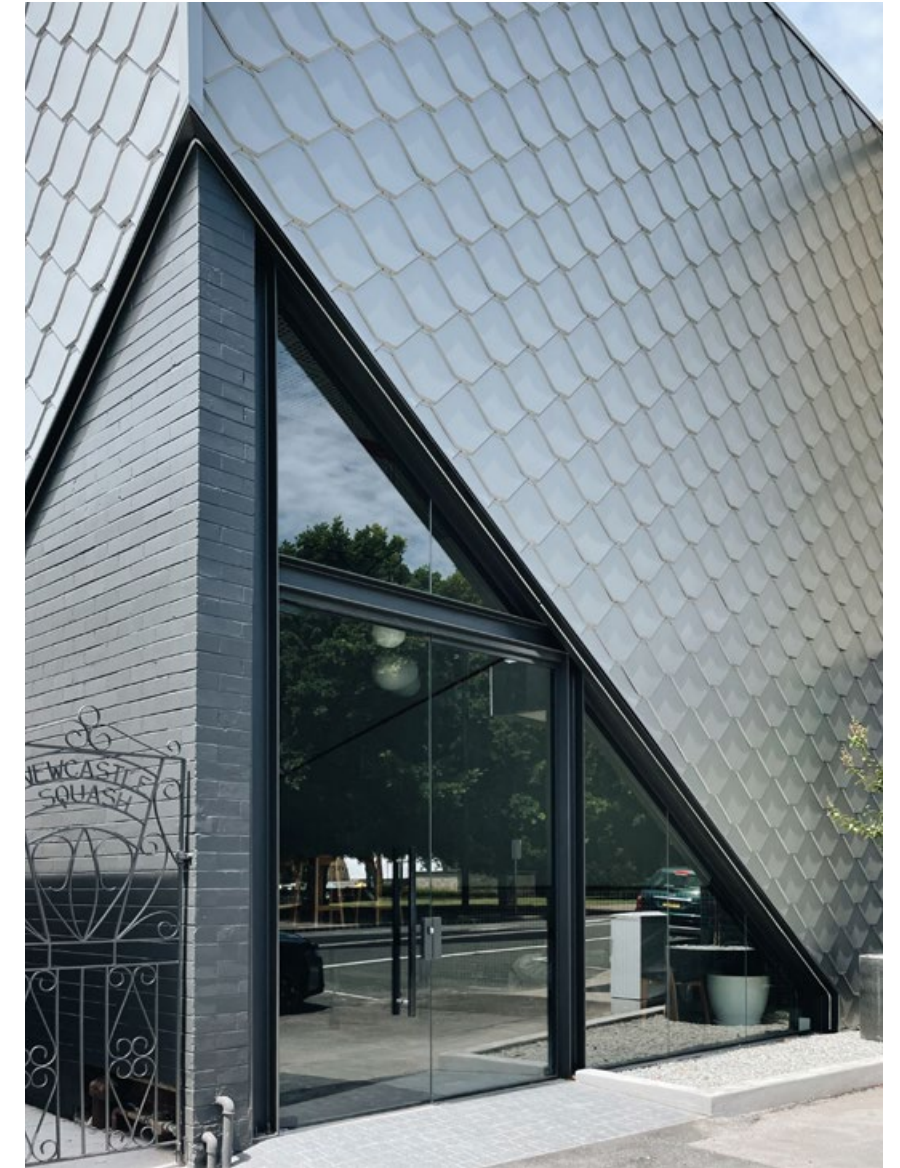
THE PANGOLIN

FABRIC ARCHITECTURE STUDIO

The Pangolin signifies a rapid urban renewal of the light industrial north-east end of Darby Street. The building has been transformed from what was a squash court into a sustainable zinc tile clad masonry building to be utilised as the headquarters for Club Projects. Fabric Architecture was commissioned for stage two: to rethink the front section of the building and repurpose the facade to humbly fit in with the evolving urban context of Newcastle.

The precise detailing of the steel-edged entry, use of zinc shingles and ambient lighting invites intrigue while the retained original gate acknowledges its past. The application of biomimicry in the design technique renders the building as a living, breathing life-form that attracts the attention of passers-by.

The Pangolin is an architectural statement, clear in its composed and considered aesthetic that transforms the building into an ambiguous and playful commercial offering and sets a standard for future development on Darby Street.





AWARD FOR EDUCATIONAL ARCHITECTURE

**ST PHILIP'S CHRISTIAN
COLLEGE CESSNOCK
SENIOR BUILDING**

SHAC

The educational facility aims to foster a feeling of respect and independence. The architects have immersed themselves in educational theory and methodology, resulting in an exciting environment that will inspire learning – a contrast to sterile enclosed educational environments.

On the ground floor, year 9 and 10 students occupy classrooms with glazed walls that slide open onto the grass playing fields, to fresh air and aspect to nature. On the upper floor, year 11 and 12 students occupy inventive learning spaces within a double height space, pods and booths, for small classes, working studio groups or individuals, for programmed or self-directed learning.

There is warmth and texture in the colour and materials with well-designed comfortable furniture of domestic character. A large senior common room, has large floor to ceiling window-doors that slide away, opening to the landscape, again giving access to fresh air and views of nature. The project is an exemplar of what educational environments should be like.





AWARD FOR INTERIOR ARCHITECTURE

**KINGSLEY BY
CRYSTALBROOK
COLLECTION**

**EJE ARCHITECTURE WITH
SUEDE INTERIOR DESIGN**

The renewal of the Kingsley by Crystalbrook reflects the mutual trust through rigorous collaboration between architect and interior designer to create a property that cultivates a seamless harmony between the brutalist identity of the building with a soft yet sophisticated interior.

The double-height lobby is one of spaciousness with mirrored walls and sculpted ceiling soffit paying homage to the architectural form and volume. Drapery softens the hard edges and branding motifs are subtly massaged into the furnishings with the canary mosaic on the ground floor bar captivating all who walk past.

PHOTOGRAPHY: NIC GOSSAGE



The journey continues up to the glass-encased rooftop where soaring views out over the city form the backdrop of the noteworthy food and beverage offering. Olive trees within the space help elevate the vertical properties and transport guests to an olive grove as they dine underneath stippled shade during the day and underneath the stars in the evening.

Overall, the interiors of Kingsley by Crystalbrook are beautifully considered and help realise the building's unrivalled and radiant potential.





AWARD FOR INTERIOR ARCHITECTURE

**LAKE MACQUARIE CITY
COUNCIL ADMINISTRATION
OFFICE FIT-OUT**

EJE ARCHITECTURE

The revamped council fit-out boldly transforms a traditional local government office into a contemporary cooperative workspace that embraces a progressively flexible work culture, advancing technologies and strong ESD principles.

Upholding ESD principles has been the philosophy behind the project and determined everything from the initial proposal down to the detailed selection of fixtures and finishes. Passive design principles combined with new ESD technologies result in a dynamic, vision-led and pioneering workspace for staff.

The clever zoning of spaces has resulted in a more efficient space, boasts connectivity, and allows staff to work in an environment that is most compatible with daily tasks.

The material palette encourages continuity throughout while respecting the original building design. Accent colours and materials inject life into the workspace, providing distinct variations to each floor. The colour scheme draws inspiration from the local region creating an accord to the surrounding landscape with each floor adopting a different accent colour way; Headland & Cliffs (Pink & Ochre hues), Bushland and Reserves (Green hues) and Lake & Ocean (Blue hues).





COMMENDATION FOR INTERIOR ARCHITECTURE

**THE LAIR
ODE STUDIO
WITH ASH GREENAWAY**

Rather than the traditional client-architect-builder relationship, this project brings together a collaborative team of creatives to achieve a space that expresses the vision and aspirations of a local fashion designer and manufacturer, Ash Greenaway.

Stripping back the innumerable discordant layers applied to a heritage building over the years, The Lair is now exposed in its bare bones beauty. The fit-out uses natural recycled materials that are delicately inserted into the interior and the detailing of joinery and spaces created merge and extend the design philosophy of the client which aims to provide a welcome sanctuary to guests.

The retail space poses a quiet ambience and an inviting aura that parallels the feeling of visiting a friend's home or a tranquil art gallery in a world of traditionally chaotic retail spaces.





COMMENDATION FOR INTERIOR ARCHITECTURE

VAMP

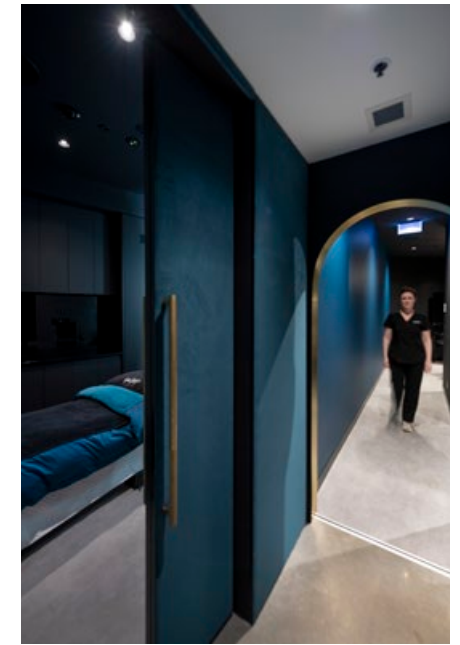
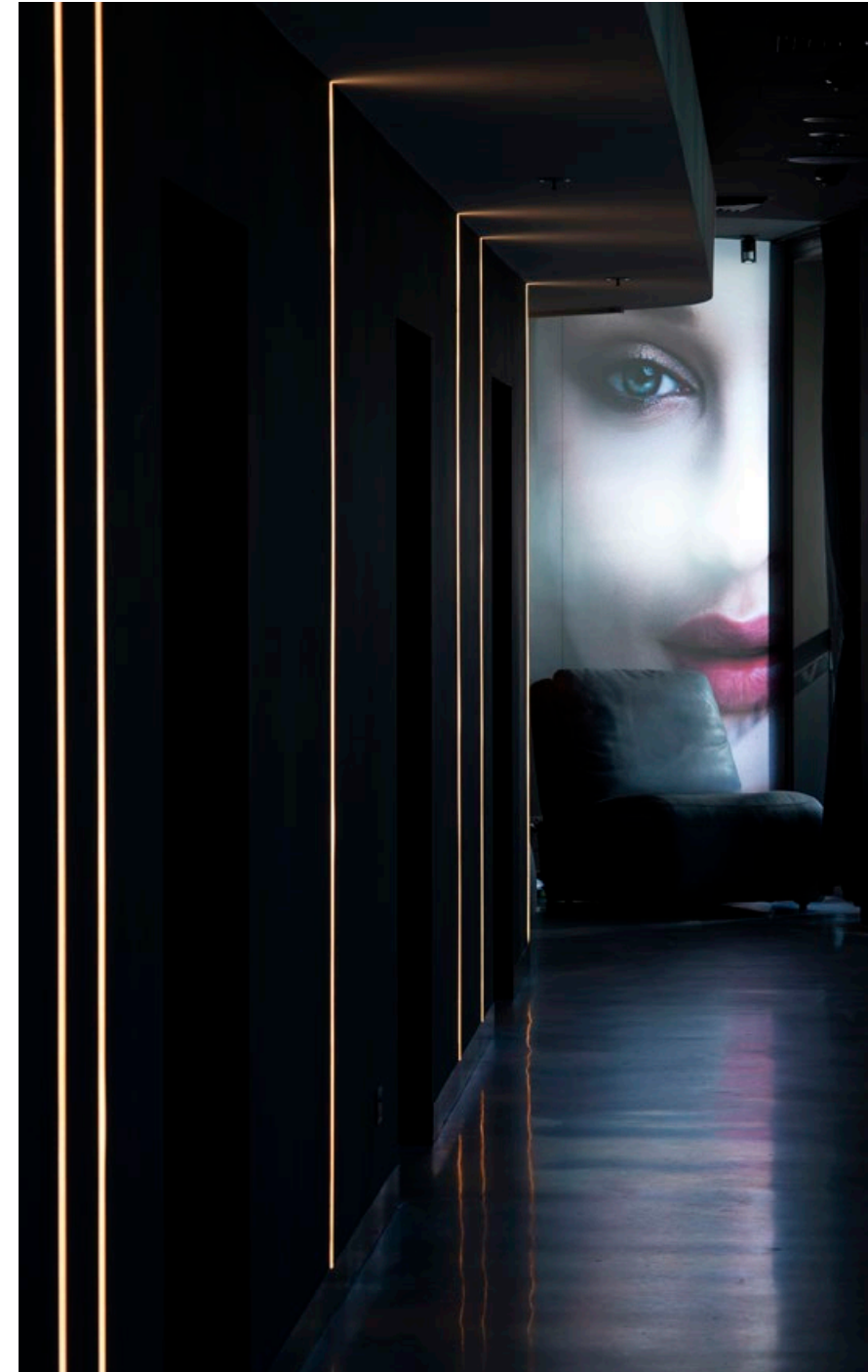
SDA ARCHITECTS

The Vamp fit-out provides a step up from the typical self-care experience through a well-designed ambient space that facilitates a sensory journey which blends clinical medicine with luxury and beauty.

The clever use of subtle indirect lighting along with borrowed natural light help manifest a relaxed environment that welcomes guests and provides an additional external source of serenity as they are tended to by specialised staff.

The dark textural interiors with brass accents, velvet banquette seating, sheer curtains, perforated screens and feature walls combine seamlessly to create a bold and beautiful space yet maintaining the discretion and elegance of an industry-leading clinic.

The internal circulation has been planned to offer an unostentatious entry for the clients. The design has divided the clinic into zones, curating a selection of spaces that are open and commodious along with rooms that are private yet welcoming.





COMMENDATION FOR SMALL PROJECT ARCHITECTURE

DOMESTIC VIOLENCE COURT ADVOCACY SERVICE MOCK COURTROOM

OUT(FIT)

Out(fit) has created a timely and process-driven response to the social duty of architecture. It provides building experience opportunities for university students and volunteers to serve marginalised communities throughout Newcastle.

The client, Newcastle Women's Domestic Violence Court Advocacy Service (NWDVCAS) offers legal aid services to people who have experienced intimate partner violence. They requested out(fit)'s services to build a mock courtroom to help familiarise clients with the courtroom environment prior to their court hearing/s.

The team worked collaboratively with legal consultants to effectively deliver modular and reconfigurable furniture pieces constructed out of 100% reclaimed hardwood, donated by a local timber recycler, and constructed by social workers.

Out(fit)'s clear purpose, planning and thinking is evident through pioneering the creation of a more compassionate and inclusive environment for survivors of domestic abuse and their families.

The result is a robustly functional structure that will provoke ongoing discourse around the role of the architect as a designer, maker, teacher, and community facilitator.





COMMENDATION FOR HERITAGE

NIHON UNIVERSITY
NEWCASTLE CAMPUS

DESIGN WORLDWIDE
PARTNERSHIP
WITH AZUSA SEKKEI CO.

The commendation is given in recognition of the restoration of the former Newcastle Courthouse, (c.1890) designed by the Colonial Architect James Barnet, and completed by his successor Walter Vernon, Government Architect.

The Courthouse is a fine example of late Victorian Classical architecture and is significant in terminating the view at the top of Bolton Street. The building had been allowed to fall into disrepair, and has been carefully restored with respect, rectifying water ingress and termite attack.

Exterior colour and details of the old building have been carefully reinstated. Retaining the old building has retained the embodied energy and avoided the ecological footprint of removal and reconstruction.





AWARD FOR URBAN DESIGN

NEWCASTLE EAST END

SJB

Newcastle is a unique city in Australia with a rich tapestry of urban form and urban spaces. A four-stage master plan, for four complete urban blocks in the city centre along Hunter Street, Newcastle's main street, has been conducted as an iterative process involving regular reviews by Newcastle Council's Urban Design Review Panel.

The result for stage one, has been the result of forensic examination of the pattern, texture and character of the urban fabric established over the many years of settlement and growth, recognising the scale and intricacy of urban spaces and the scale of the varied buildings around which they are formed.

With rejuvenation and restoration at its core, the apartments in stage one have been designed to retain key heritage elements, producing a village atmosphere that respects the past while delivering 28,000 sq. metres of residential accommodation plus some retail space and an hotel, in the repurposed David Jones building.





COMMENDATION FOR URBAN DESIGN

**NEWCASTLE STATION
AND PUBLIC DOMAIN**

CONRAD GARGETT

Following the closure of the railway to Newcastle Station, restoration of the significant station building was followed by plans for the revitalisation of the public realm – the station platforms and railway precinct.

The consultants have implemented a masterplan which revitalises the areas creating a new urban plaza providing activated multi-use spaces that can be enjoyed by the public at all times, with a facility to accommodate large open-air functions as ticketed events.

The design evolved through historical investigation of previous shore-lines, middens, industry and the rail corridor. Features include a misting system with coloured lighting, robust seating and endemic coastal landscaping.





AWARD FOR PUBLIC ARCHITECTURE

**TUNCURRY MUSEUM
AND GOLF FACILITY**

MICHAEL FOX ARCHITECTS

The new Tuncurry Museum and Golf Facility is a public building beautifully detailed and sensitively provides a relationship between the new Clubhouse and an enduring typology respecting the heritage contents.

The planning has a direct relationship to vistas in the landscape and the building form is articulated to relate directly to the internal program. The scale has been carefully considered to ensure it does not dominate the landscape but rather resides peacefully within it.

ESD principles have been incorporated through a structure-free floor plate with minimal embodied energy to minimise structural complexity. Low embodied energy of materials was a core driver in the design process and has clearly influenced the building's tectonics.

Through the use of recycled materials, the building has integrated a chronological narrative that speaks throughout the fabric and connection to its natural environment.





**AWARD FOR RESIDENTIAL ARCHITECTURE
– MULTIPLE HOUSING**

**NEWCASTLE EAST END
STAGE 1**

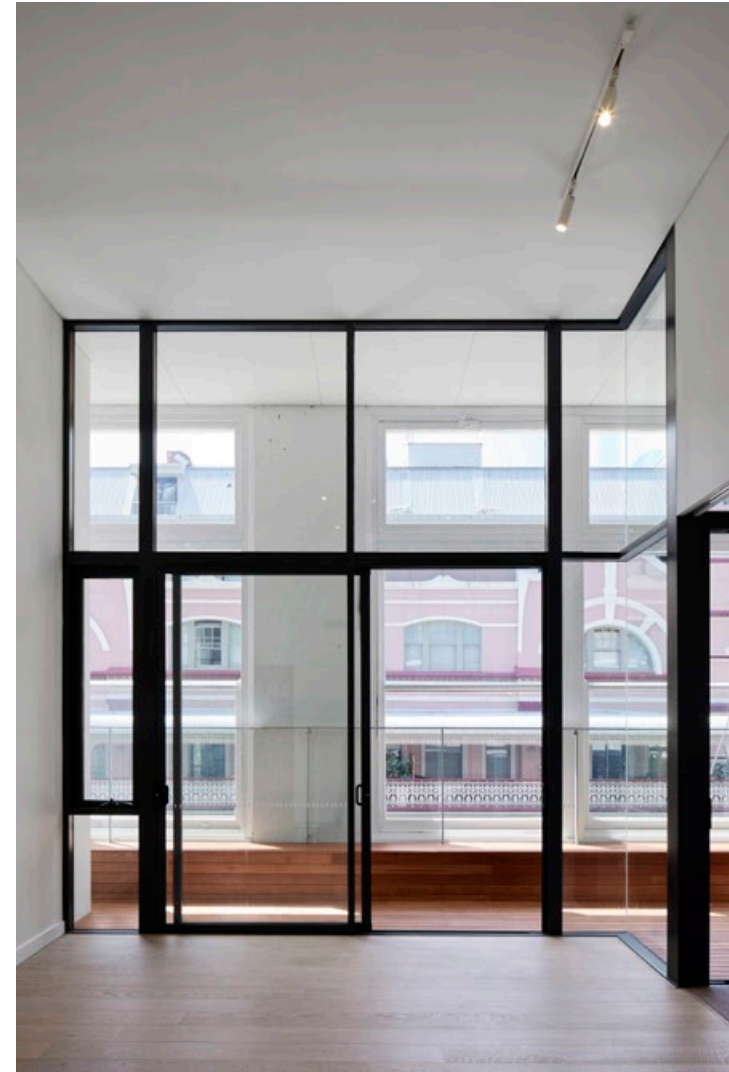
**SJB
DURBACH BLOCK JAGGERS
& TONKIN ZULAIKHA GREER**

This large development of 212 apartments is unique in the collaboration by three separate architectural practices who worked together as a team, resulting in an imaginative urban intervention of varied architectural languages grounded on an interrogation of the texture of the townscape and carriageways, and the diverse architectural styles that preceded.

Excellence in the urban response has given the city and its people new courtyards and laneways - places - and the architectural outcomes have grown from observation of details, materials and rhythms in the remnants retained and the buildings removed.

What is rich about the whole project, is the diversity of architectural languages, that has been made possible by three architectural practices working in collaboration, delivering diversity, rather than one huge residential block in a single architectural style. Congratulations to SJB for sharing, congratulations all the architects for the sensitivity to the place, to the streets, to the architectural precedents. Congratulations for the quality of the architectural outcomes, for the interiors, for the little places of delight.

Congratulations to all the consultants and the builders Richard Crookes. And most of all congratulations to the developers Iris Capital.





**AWARD FOR RESIDENTIAL ARCHITECTURE
– HOUSES (NEW)**

HAMILTON GARDEN HOUSE

MSDS

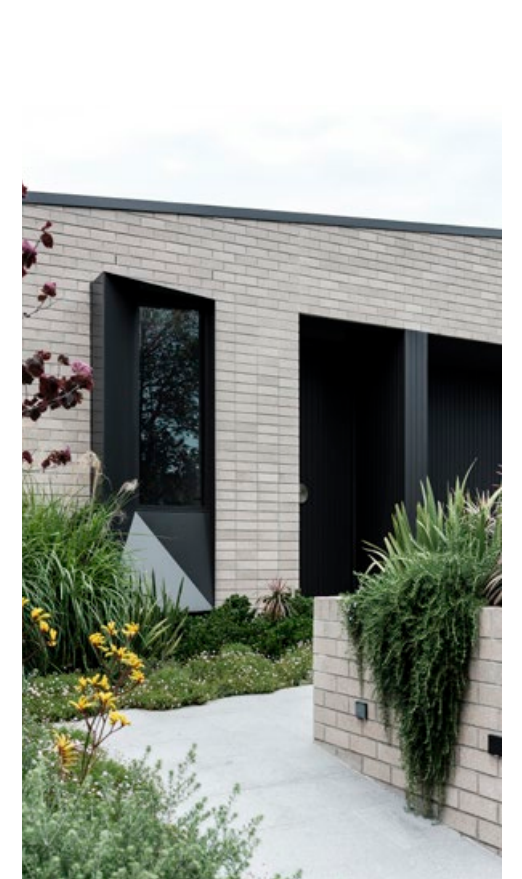
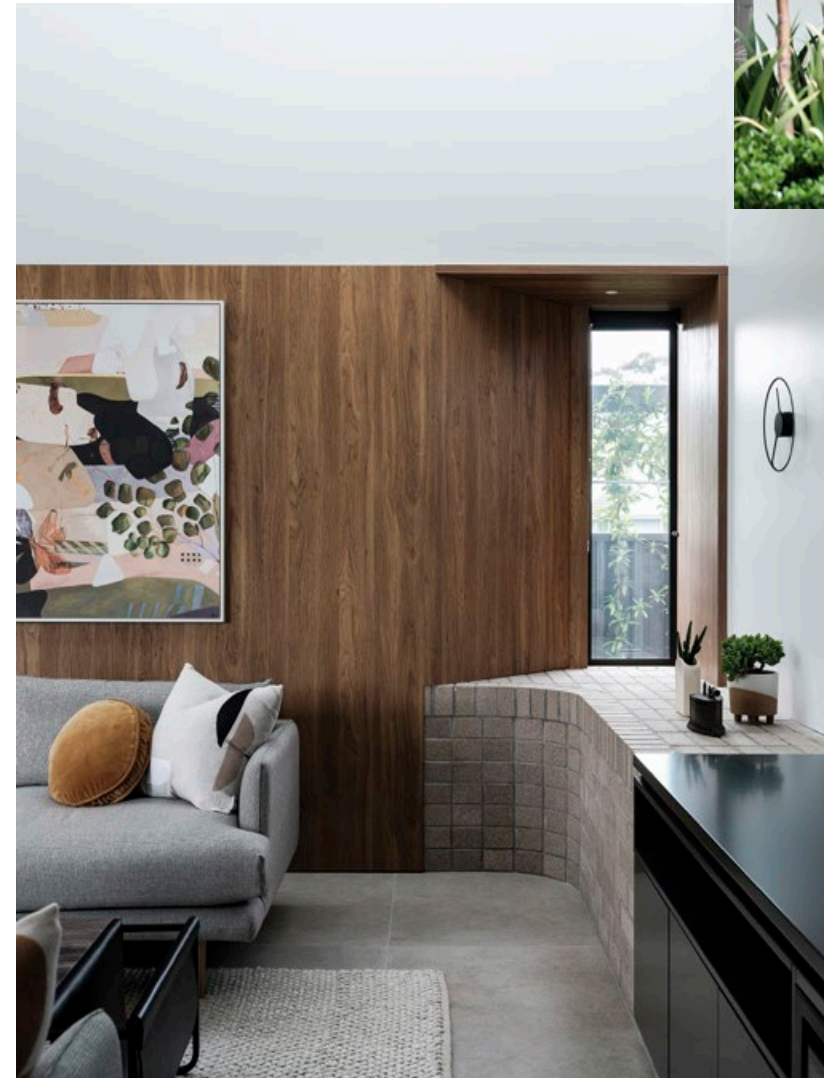
Set in the sprawling burbs of Newcastle this home represents the value of what good design can bring to our towns and the people who reside in them, namely simple but strong spatial gestures.

The dwelling replaces a dysfunctional project home and showcases the potential of the architecture to come which is achieving understated sophistication through prioritising experience of space over quantity and ostentation.

The street presentation utilises commonly available materials with details that allude to something more such as hints of stack bond brickwork and a contemporary window pop-out.

The concise planning wraps a northern courtyard filling the space with light, air and direct connection into the lush garden and tree canopies beyond.

A high-level window carved out of the section provides the sculptural architectural element, bouncing diffuse light into the linear living areas and pushing the proportion of the room up and out. Joinery is utilised strategically to house the client's worldly treasures. The result? A serene, seamless, and effervescent home environment.



2022 NEWCASTLE ARCHITECTURE AWARDS – ALL ENTRIES



COMMERCIAL ARCHITECTURE
ING WYONG
 CKDS ARCHITECTURE
 PHOTOGRAPHER GIBBENS GROUP



COMMERCIAL ARCHITECTURE
KINGSLEY BY CRYSTALBROOK COLLECTION
 EJE ARCHITECTURE
 PHOTOGRAPHER NIC GOSSAGE



COMMERCIAL ARCHITECTURE
THE PANGOLIN
 FABRIC ARCHITECTURE STUDIO
 PHOTOGRAPHER GRACE PICOT



INTERIOR ARCHITECTURE
KINGSLEY BY CRYSTALBROOK COLLECTION
 EJE ARCHITECTURE WITH SUEDE INTERIOR DESIGN
 PHOTOGRAPHER NATHAN DAWES



INTERIOR ARCHITECTURE
SDA
 SDA
 PHOTOGRAPHER MURRAY MCKEAN



INTERIOR ARCHITECTURE
THE LAIR
 ODE STUDIO WITH ASH GREENAWAY
 PHOTOGRAPHER BRENDAN FROST



EDUCATION ARCHITECTURE
Q BUILDING - THE UNIVERSITY OF NEWCASTLE
 EJE ARCHITECTURE
 PHOTOGRAPHER MURRY MCKEAN



EDUCATIONAL ARCHITECTURE
NIHON UNIVERSITY NEWCASTLE CAMPUS
 DESIGN WORLDWIDE PARTNERSHIP WITH AZUSA SEKKEI
 PHOTOGRAPHER RODRIGO VARGAS



EDUCATIONAL ARCHITECTURE
SPCC CESSNOCK SENIOR SCHOOL
 SHAC
 PHOTOGRAPHER ALEXANDER McINTYRE



INTERIOR ARCHITECTURE
LAKE MACQUARIE CITY COUNCIL ADMINISTRATION OFFICE
 EJE ARCHITECTURE
 PHOTOGRAPHER ALEX MCINTYRE



INTERIOR ARCHITECTURE
VAMP
 SDA
 PHOTOGRAPHER MURRAY MCKEAN



INTERIOR ARCHITECTURE
LOCAL CONNECTIONS UNIVERSITY OF NEWCASTLE
 TONKIN ZULAIKHA GREER ARCHITECTS
 PHOTOGRAPHER MURRAY MCKEAN



EDUCATIONAL ARCHITECTURE
ST MARY'S CATHOLIC COLLEGE STAGE 2 ADMIN BUILDING
 QUINN O'HANLON ARCHITECTS PTY LTD
 PHOTOGRAPHER ADAM BENNETT QOH



HERITAGE
NIHON UNIVERSITY NEWCASTLE CAMPUS
 DESIGN WORLDWIDE PARTNERSHIP WITH AZUSA SEKKEI
 PHOTOGRAPHER RODRIGO VARGAS



INTERIOR ARCHITECTURE
CATHERINE MCAULEY CATHOLIC CHAPEL
 WEBBER ARCHITECTS
 PHOTOGRAPHER GREY GRIFFIN



PUBLIC ARCHITECTURE
TUNCURRY MUSEUM AND GOLF FACILITY
 MICHAEL FOX ARCHITECTS
 PHOTOGRAPHER JAMES BOWMAN



PUBLIC ARCHITECTURE
CATHERINE MCAULEY CATHOLIC CHAPEL
 WEBBER ARCHITECTS
 MOIR LANDSCAPE ARCHITECTURE



RESIDENTIAL ARCHITECTURE – HOUSES (NEW)
CORYMBIA
 HUMAN SPACES BY JILL GLEAVE ARCHITECTURE
 PHOTOGRAPHER ST JOHN IMAGERY

2022 NEWCASTLE ARCHITECTURE AWARDS – ALL ENTRIES



RESIDENTIAL ARCHITECTURE - HOUSES (NEW)
HAMILTON GARDEN HOUSE
 MSDS
 PHOTOGRAPHER TOM FERGUSON PHOTOGRAPHY



RESIDENTIAL ARCHITECTURE - MULTIPLE HOUSING
NEWCASTLE EAST END STAGE 1
 SJB, DURBACH BLOCK JAGGERS & TONKIN ZULAIKHA GREER
 PHOTOGRAPHER TOM ROE



RESIDENTIAL ARCHITECTURE - MULTIPLE HOUSING
FORESHORE APARTMENTS
 EJE ARCHITECTURE
 PHOTOGRAPHER ALEX MCINTYRE



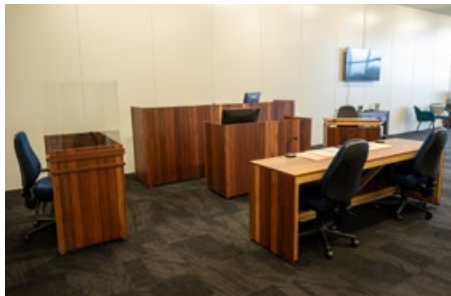
URBAN DESIGN
KINGSLEY BY CRYSTALBROOK COLLECTION
 EJE ARCHITECTURE
 PHOTOGRAPHER NIC GOSSAGE



URBAN DESIGN
NEWCASTLE EAST END
 SJB
 PHOTOGRAPHER TOM ROE



URBAN DESIGN
NEWCASTLE STATION AND PUBLIC DOMAIN
 CONRAD GARGETT
 PHOTOGRAPHER MARCELO LOCANE PHOTOGRAPHY



SMALL PROJECT ARCHITECTURE
DOMESTIC VIOLENCE COURT ADVOCACY SERVICE
 MOCK COURTROOM
 OUT(FIT)
 PHOTOGRAPHER JED CRANFIELD



NEWCASTLE
 ARCHITECTURE
 AWARDS
 2022