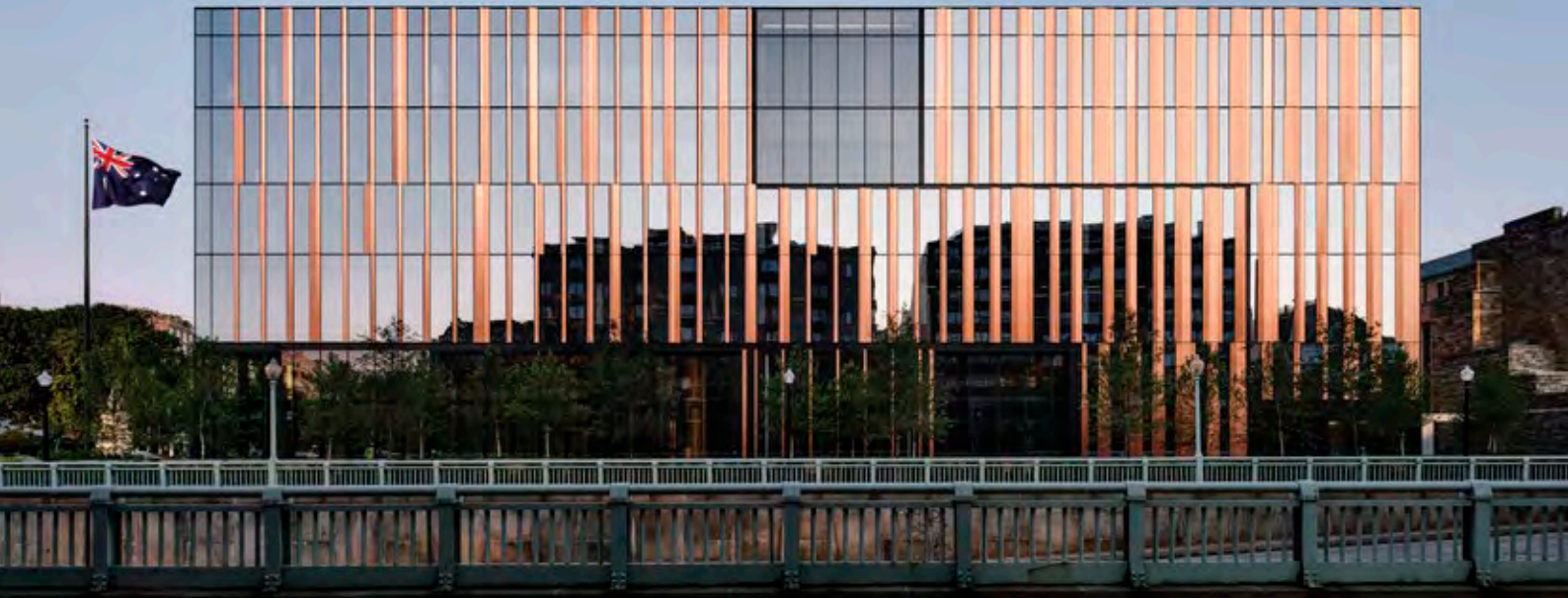


INTERNATIONAL CHAPTER
ARCHITECTURE AWARDS 2024

 Australian
Institute of
Architects





Building your confidence

Our philosophy is simple: to protect the business risks of architects and other professional practices in the built environment, supported through sustainable commercial insurance, professional advice, and risk management. Today with the continued support of The Institute members, Planned Cover insures the majority of registered Architects within Australia.

This year, Planned Cover celebrates 50 years in the market. Over the past five decades, we have evolved into a market leader in built environment risk solutions, expanding our services while staying true to our mission. Together, we are shaping a legacy and embracing the future.



The International Chapter of the Australian Institute of Architects (the Institute) thanks our generous partners for supporting the 2024 International Chapter Architecture Awards.

National Corporate Partners



National Supporting Partners



National Insurance Partner

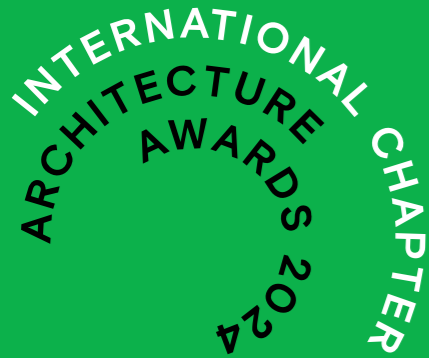


National Media Partner



National Photography Partner





Contents

- 5 FROM THE INTERNATIONAL CHAPTER CHAIR
- 6 FROM THE JURY CHAIR
- 7 2024 JURORS
- 8 COMMERCIAL ARCHITECTURE
- 10 INTERIOR ARCHITECTURE
- 12 PUBLIC ARCHITECTURE
- 18 RESIDENTIAL ARCHITECTURE - HOUSES (NEW)
- 20 SMALL PROJECT ARCHITECTURE
- 22 WILLIAM J MITCHELL PRIZE
- 23 INTERNATIONAL CHAPTER ARCHITECTURE AWARDS GALLERY

From the International Chapter Chair



JUSTIN HILL LFRAIA MSIA
CHAIR, INTERNATIONAL CHAPTER

This a landmark year for the Australian Institute of Architects Chapter Awards, because for the first time two chapters are holding a combined Awards ceremony: the Tasmanian Chapter and the International Chapter; one celebrating outstanding Tasmanian projects, the other celebrating the most noted projects completed overseas by any Institute member. On behalf of the International Chapter Council, I would like to express our gratitude for this opportunity, to our eminent jury members, and to all the architects who entered their projects. A special thanks also to our remarkable professional staff in Hobart who have been responsible for making this event happen.

Having worked overseas for the last 40 years, I have often noticed how challenging it can be to deliver a building of great quality in diverse locations where sometimes the spoken language, regulatory environment or expectations often differ from those we are more familiar with in Australia, or wherever an architect's studio is located. But our members have proven in these awards that the highest quality does prevail, regardless of where that may be in the world. That quality is something to be very proud of and to celebrate here in Hobart this week. Congratulations, all.

Justin Hill LFRAIA, MSIA
Chair, International Chapter

From the Jury Chair



SAMANTHA COTTERELL FRAIA
JURY CHAIR, 2024

It is a thrilling moment for the International Chapter when the Awards cycle comes around. It offers the opportunity to see through the eyes and appreciate the talents of our members practicing across the globe. The projects presented here are not just about architecture; they are also the stories of architects who have chosen a working life that contributes to foreign contexts and communities, stories of other cultures and geographies, and stories of the challenges and successes in our profession beyond our borders. In my role as Jury Chair, I have been astounded to witness the exquisite architectural responses and the many stories that have emerged from the projects in our awards programme this year.

My fellow jury members and I have had the honour and the pleasure to observe how Australian spatial and architectural concepts translate to projects in distant lands. We were shown the childhood memories of family summers in Sweden, and how nostalgia informs the selection of materials and an approach to site. We were taken into a city in Hungary that was reinvigorated by the renovation of a heritage building, and shown how the concept of opening up to its surroundings created a new urban reality for the residents. Likewise, we were taken into a town in Papua New Guinea where the refurbishment of a market place revitalised what was an unsafe place for women, who are the main vendors, and fostered social change that improved both business and community.

We visited the diplomatic quarters of Washington DC, where the architects have created a masterpiece that stands as a proud and creative representation of Australia, its values, and its unique natural environment. It is testament to the Australian spirit and to our education in architecture that each project carries with it its own version of Australian identity.

Awarding the International Chapter projects can be challenging because the contexts of the projects are so diverse, but what becomes evident in this exercise is the value of architecture—how it uplifts, resolves and challenges, how it refines, defines and redefines the ways in which it contributes to the development of current thinking in life as much as in the built environment.

In addition to the established programme, it is our great pleasure and honour this year to award the first iteration of the Louise Cox Award.

Samantha Cotterell, FRAIA
Jury Chair, 2024 International Chapter Architecture Awards

2024 Jurors



Samantha Cotterell, FRAIA
Jury Chair



Tim Bradley, RAIA



Kate McMahon, RAIA

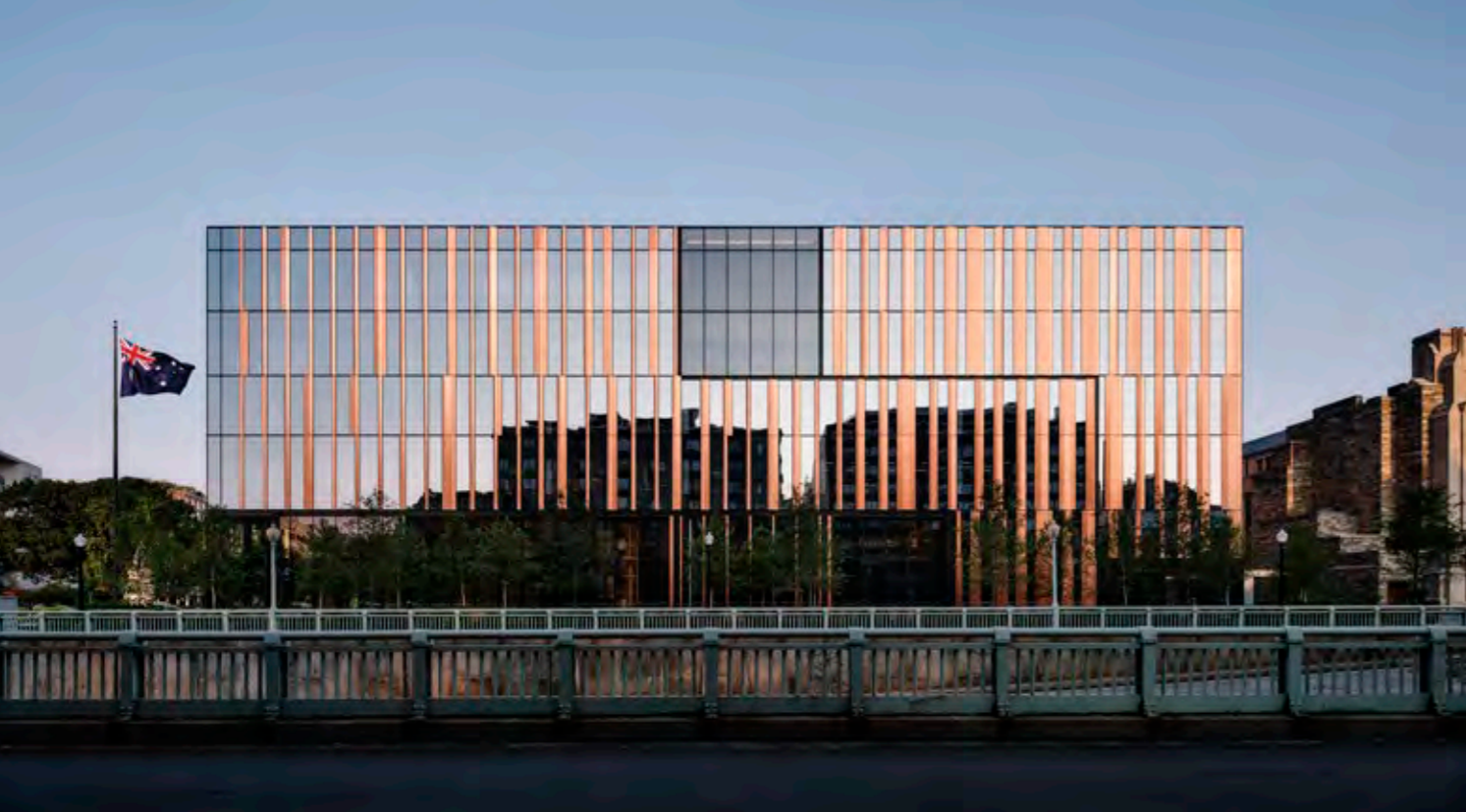


Peter Kirkness, RAIA



Antonia Syme, AM

WILLIAM J MITCHELL PRIZE JURY
International Chapter Council



AWARD FOR COMMERCIAL ARCHITECTURE

**THE EMBASSY OF AUSTRALIA
WASHINGTON D.C.**

by
BATES SMART

Builder: Clark Constructions

Photographer: Joe Fletcher

The new Australian Embassy in Washington sits confidently on its site in Massachusetts Ave; an exemplar of refined and innovative commercial architecture that offers up to Washington subtle colours of the Australian landscape.

The variegated staccato of the bespoke copper cladding fins catches the light in different hues throughout the day, while the glazed façade between the fins emerges translucent into the evening twilight. Shadow-lines, recesses and rhythm are deployed to refine subtle massing elements and reference the fault lines of a rocky outcrop.

The built form maximises the permissible building envelope, yet allows for a Tarkine-inspired sunken garden at the south-west corner, whose soft landscaping will connect spatially to the main entry drop-off at ground level above. The generosity of the central light-filled atrium is remarkable, cloaked in deep honeyed-blond horizontal layers of vertically-stacked native timber veneers and screens.

Security and circulation routes are rigorously streamlined, yet with a clever shifting of the core at upper level, staff from different siloed departments are brought back together into a vertically orientated social space which borrows light from the soaring atrium. Meanwhile, Australian artists are quietly championed, with striking commissions for bespoke furniture, art and textiles, organised through a collaboration with the DIA.

PROJECT PRACTICE TEAM

Simon Swaney, Project Director

Kristen Whittle, Design Director Architecture

Mark Healey, Design Director Interiors

Steve Jones, Project Leader (Delivery)

Timothy Leslie, Project Leader (Design)

Cian Davis, Design Leader

Ray Feile, Project Architect

Eamon Harrington, Project Architect

Brendan Grayson, Graduate of Architecture

Rachael McCarthy, Interior Design

Wai Fong Chin, Interior Design

Chris Prince, Project Architect

Christian Grossi, Interior Design

Emma Serraglio, Interior Design

Andrada Olteanu, Graduate of Architecture

Amy Banfield, Interior Design

Ali Bolandnazar, BIM

Lai Yee Chan, Interior Design

Brian Mason, BIM

Caroline Surgiato, Interior Design

Joel Collins, Graduate of Architecture

Allan Lamb, Project Architect

Celine Herbiet, Project Architect

Gabrielle Hamilton, Interior Design

Carli Popplewell, Interior Design

Raymond Butt, Project Architect

Emma Wingad, Interior Design

Ian Potter, 3D Visualisations

Christopher White, Model Maker

Henry Howson, Graduate of Architecture

PROJECT CONSULTANT AND CONSTRUCTION TEAM

KCCT, Role US Architect of Record

Jacobs, Project Manager

Aurecon (Australia), Structural Engineer

SGH (US), Structural Engineer

Aurecon (Australia), Services Consultant

Interface (US), Services Consultant

Aurecon (Australia), ESD Consultant

Arup (US), ESD Consultant

Aurecon (Australia), Hydraulic Consultant

Interface (US), Hydraulic Consultant

Aurecon (Australia), Civil Consultant

Sorba (US), Civil Consultant

Wiles Mensch (US), Landscape Consultant

RLB, Quantity Surveyor

Aurecon (Australia), Facade Engineer

SGH (US), Facade Engineer

Aurecon (Australia), Electrical Consultant

Interface (US), Electrical Consultant

Aurecon (Australia), Vertical Transport

Interface (US), Vertical Transport

Aurecon (Australia), Fire Services

Aurecon (Australia), AV Consultant

Interface (US), AV Consultant

Aurecon (Australia), Fire Engineering

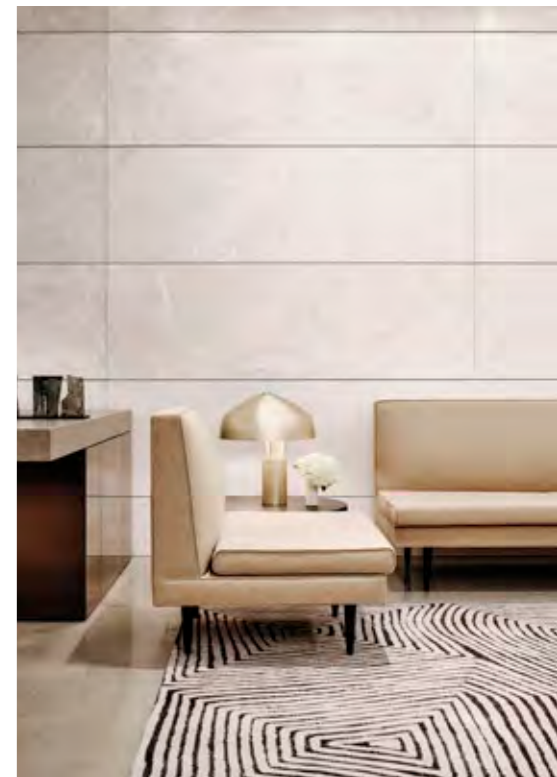
Arup (US), Fire Engineering

Aurecon (Australia), Acoustic Consultant

Arup (US), Acoustic Consultant

Wells & Associates (US), Traffic Consultant

Studio Ongarato, Graphics / Signage



AWARD FOR INTERIOR ARCHITECTURE

THE EMBASSY OF AUSTRALIA
WASHINGTON D.C.

by
BATES SMART

Builder: Clark Constructions
Photographer: Joe Fletcher

The Embassy interior successfully promotes openness and transparency whilst also skilfully addressing the pragmatic issues of security and restricted access required of buildings of this nature. The central circulation spine or 'street', as an extension of the city, allows visitors and occupants to comprehend and navigate the building in multiple dimensions—from the ground plane and horizontal connections with the city, to the dramatic and jewel-like atrium at the heart of the building which connects earth and sky.

The architects have abstracted the Australian landscape in the use of textures and striated native timbers, complementing the architectural language of the exterior. This sophisticated layering and activation of space creates an interior filled with warmth and facilitates a changing play of light and shadow throughout the building. The interiors demonstrate a timeless and elegant use of Australian materials and a refined and restrained palette. There is a sophisticated level of craftsmanship and detailing here, including the well-considered use of Australian furniture, and Indigenous design in art and rugs that highlight Australian creative excellence.

Australia's new Embassy is both functional and delightful; its expansive and generous light-filled interiors are unashamedly grand but also warm and intimate, showcasing Australia at its modern, vibrant, and welcoming best.

PROJECT PRACTICE TEAM

Simon Swaney, Project Director	Amy Banfield, Interior Design
Kristen Whittle, Design Director Architecture	Ali Bolandnazar, BIM
Mark Healey, Design Director Interiors	Lai Yee Chan, Interior Design
Steve Jones, Project Leader (Delivery)	Brian Mason, BIM
Timothy Leslie, Project Leader (Design)	Caroline Surgiato, Interior Design
Cian Davis, Design Leader	Joel Collins, Graduate of Architecture
Ray Feile, Project Architect	Allan Lamb, Project Architect
Eamon Harrington, Project Architect	Celine Herbiet, Project Architect
Brendan Grayson, Graduate of Architecture	Gabrielle Hamilton, Interior Design
Rachael McCarthy, Interior Design	Carli Popplewell, Interior Design
Wai Fong Chin, Interior Design	Raymond Butt, Project Architect
Chris Prince, Project Architect	Emma Wingad, Interior Design
Christian Grossi, Interior Design	Ian Potter, 3D Visualisations
Emma Serraglio, Interior Design	Christopher White, Model Maker
Andrada Olteanu, Graduate of Architecture	Henry Howson, Graduate of Architecture

PROJECT CONSULTANT AND CONSTRUCTION TEAM

KCCT, Role US Architect of Record	SGH (US), Facade Engineer
Jacobs, Project Manager	Aurecon (Australia), Electrical Consultant
Aurecon (Australia), Structural Engineer	Interface (US), Electrical Consultant
SGH (US), Structural Engineer	Aurecon (Australia), Vertical Transport
Aurecon (Australia), Services Consultant	Interface (US), Vertical Transport
Interface (US), Services Consultant	Aurecon (Australia), Fire Services
Aurecon (Australia), ESD Consultant	Aurecon (Australia), AV Consultant
Arup (US), ESD Consultant	Interface (US), AV Consultant
Aurecon (Australia), Hydraulic Consultant	Aurecon (Australia), Fire Engineering
Interface (US), Hydraulic Consultant	Arup (US), Fire Engineering
Aurecon (Australia), Civil Consultant	Aurecon (Australia), Acoustic Consultant
Sorba (US), Civil Consultant	Arup (US), Acoustic Consultant
Wiles Mensch (US), Landscape Consultant	Wells & Associates (US), Traffic Consultant
RLB, Quantity Surveyor	Studio Ongarato, Graphics / Signage
Aurecon (Australia), Facade Engineer	



LOUISE COX AWARD FOR PUBLIC ARCHITECTURE

THE EMBASSY OF AUSTRALIA WASHINGTON D.C.

by
BATES SMART

Builder: Clark Constructions
Photographer: Joe Fletcher

The design of the new Embassy bravely eschews monumentality and excessive deference to its eminent Washington DC surroundings to paint a compelling picture of Australia as a vibrant, inviting, and youthful country. This picture is realised with remarkable consistency at every scale from urban form to crafted interior detail, and it is a testament to the commitment of both client and architect in delivering on the promise of the original competition-winning scheme.

The building plan skilfully responds to the inherent paradox of the Embassy brief, which called for a place that was at once highly secure whilst also open and welcoming. A sequence of connected representational spaces are flooded with light from the central atrium, creating a sense of transparency across the ground plane that is not encumbered by the usual security infrastructure thanks to careful orchestration of visitor and staff circulation.

References to the Australian landscape are unmistakable, from the gleaming copper and glass facade recalling expansive skies and red earth, to the layered interior panelling echoing the peeling bark of a eucalypt forest. Works by Australian artists and makers are well chosen and bring a depth of colour, detail, and texture with a strong sense of belonging to the building.

PROJECT PRACTICE TEAM

- | | |
|---|--|
| Simon Swaney, Project Director | Amy Banfield, Interior Design |
| Kristen Whittle, Design Director Architecture | Ali Bolandnazar, BIM |
| Mark Healey, Design Director Interiors | Lai Yee Chan, Interior Design |
| Steve Jones, Project Leader (Delivery) | Brian Mason, BIM |
| Timothy Leslie, Project Leader (Design) | Caroline Surgiato, Interior Design |
| Cian Davis, Design Leader | Joel Collins, Graduate of Architecture |
| Ray Feile, Project Architect | Allan Lamb, Project Architect |
| Eamon Harrington, Project Architect | Celine Herbiet, Project Architect |
| Brendan Grayson, Graduate of Architecture | Gabrielle Hamilton, Interior Design |
| Rachael McCarthy, Interior Design | Carli Popplewell, Interior Design |
| Wai Fong Chin, Interior Design | Raymond Butt, Project Architect |
| Chris Prince, Project Architect | Emma Wingad, Interior Design |
| Christian Grossi, Interior Design | Ian Potter, 3D Visualisations |
| Emma Serraglio, Interior Design | Christopher White, Model Maker |
| Andrada Olteanu, Graduate of Architecture | Henry Howson, Graduate of Architecture |

PROJECT CONSULTANT AND CONSTRUCTION TEAM

- | | |
|---|---|
| KCCT, Role US Architect of Record | SGH (US), Facade Engineer |
| Jacobs, Project Manager | Aurecon (Australia), Electrical Consultant |
| Aurecon (Australia), Structural Engineer | Interface (US), Electrical Consultant |
| SGH (US), Structural Engineer | Aurecon (Australia), Vertical Transport |
| Aurecon (Australia), Services Consultant | Interface (US), Vertical Transport |
| Interface (US), Services Consultant | Aurecon (Australia), Fire Services |
| Aurecon (Australia), ESD Consultant | Aurecon (Australia), AV Consultant |
| Arup (US), ESD Consultant | Interface (US), AV Consultant |
| Aurecon (Australia), Hydraulic Consultant | Aurecon (Australia), Fire Engineering |
| Interface (US), Hydraulic Consultant | Arup (US), Fire Engineering |
| Aurecon (Australia), Civil Consultant | Aurecon (Australia), Acoustic Consultant |
| Sorba (US), Civil Consultant | Arup (US), Acoustic Consultant |
| Wiles Mensch (US), Landscape Consultant | Wells & Associates (US), Traffic Consultant |
| RLB, Quantity Surveyor | Studio Ongarato, Graphics / Signage |
| Aurecon (Australia), Facade Engineer | |



AWARD FOR PUBLIC ARCHITECTURE

ACTICITY CENTRE FOR DANCE AND MOVEMENT-BASED ARTS

by
GALL AND ASSOCIATES –
GALL ÉS TÁRSAI ÉPÍTÉSZIRODA

Builder: Veszprémbér KFT – Vemévszer KFT
Concorcium

Photographer: Balazs Danyi

Veszprem’s new Dance Centre has been skilfully integrated into its surrounding context as a new vibrant cultural hub between the new urban piazza facing the city and University, and a softer park-like landscape. The architects took an uninspiring collection of buildings and addressed a complicated brief with rigorous aplomb. They confidently addressed many challenging issues, including urban design and connectivity, the creation of new public space, as well as heritage, restoration, and sustainability.

At the centre of the project is the immaculately restored former Children’s Hospital. Other, more functional structures from Hungary’s post-war era have been preserved and cleverly transformed, retaining the embodied carbon within whilst being cohesively incorporated and connected to each other.

With a refined plan and section, and a controlled palette of materials, a well-considered community facility and series of internal and external spaces has been achieved. The articulated ‘modernist’ aesthetic for the curtain walling, together with a clearly expressed structure, is a bold but successful counterpoint to the restored heritage buildings.

This new amenity has successfully revitalised a derelict but important brown field site, carefully knitting it back into the city fabric. This is a fine example of placemaking and urban healing.

PROJECT PRACTICE TEAM
Anthony Gall, Design Architect
Lili Kovacs, Project Team
Eszter Gall, Graduate of Architecture

PROJECT CONSULTANT AND CONSTRUCTION TEAM
I-Quadrat KFT, Structural Engineer





COMMENDATION FOR PUBLIC ARCHITECTURE

KIMBE MARKET REDEVELOPMENT

by
PAWA ARCHITECTURE

Traditional Owners: West New Britain has seven major tribes, the Nakanai, Bakovi, Kove, Unea, Maleu, Kaulong and Arowe

Builder: Minpac Construction

Photographer: MANAS

A design process founded upon careful analysis of the needs of the community has delivered a simple and elegant building that is clearly having a hugely positive impact on the lives of its many users.

Improving safety for the (mostly female) market traders was a key objective. This informed the creation of a separated entrance zone for vendors, provision of on-site banking, and an open and permeable plan that promotes passive surveillance. The market is naturally breezy, beneath a lofty steel roof that echoes the form of the existing buildings and creates a welcoming civic presence.

PROJECT PRACTICE TEAM

Andrew McFadden, Design Architect, Documentation Architect

Andrew Jehne, Project Architect

Richard Kurua, Graduate of Architecture

PROJECT CONSULTANT AND CONSTRUCTION TEAM

All Construction Approvals, Building Surveyor

ESIP, Program Manager

Integral Group, Services Consultant

NAMA Engineering, Structural Engineer

Solis Fire Engineering, Fire Engineer





COMMENDATION FOR RESIDENTIAL
ARCHITECTURE - HOUSES (NEW)

LÅNGHUS

by
RAAARCHITECTS PTY LTD

Builder: Totalbyggen Vast

Photographer: Erik Lefvander

Conceived as an elegant steel-wrapped meditation on the Swedish vernacular, this rigorously detailed summerhouse on the Swedish west coast responds to themes of memory, landscape, and connection to place. Conforming to a strict set of criteria aimed at protecting the ecologically sensitive wetlands and nearby fjord, the façade, compact formal geometries, and materiality sit in harmony with the woodland setting, weaving a narrative of a childhood growing up nearby with a nuanced understanding of designing for the seasons.

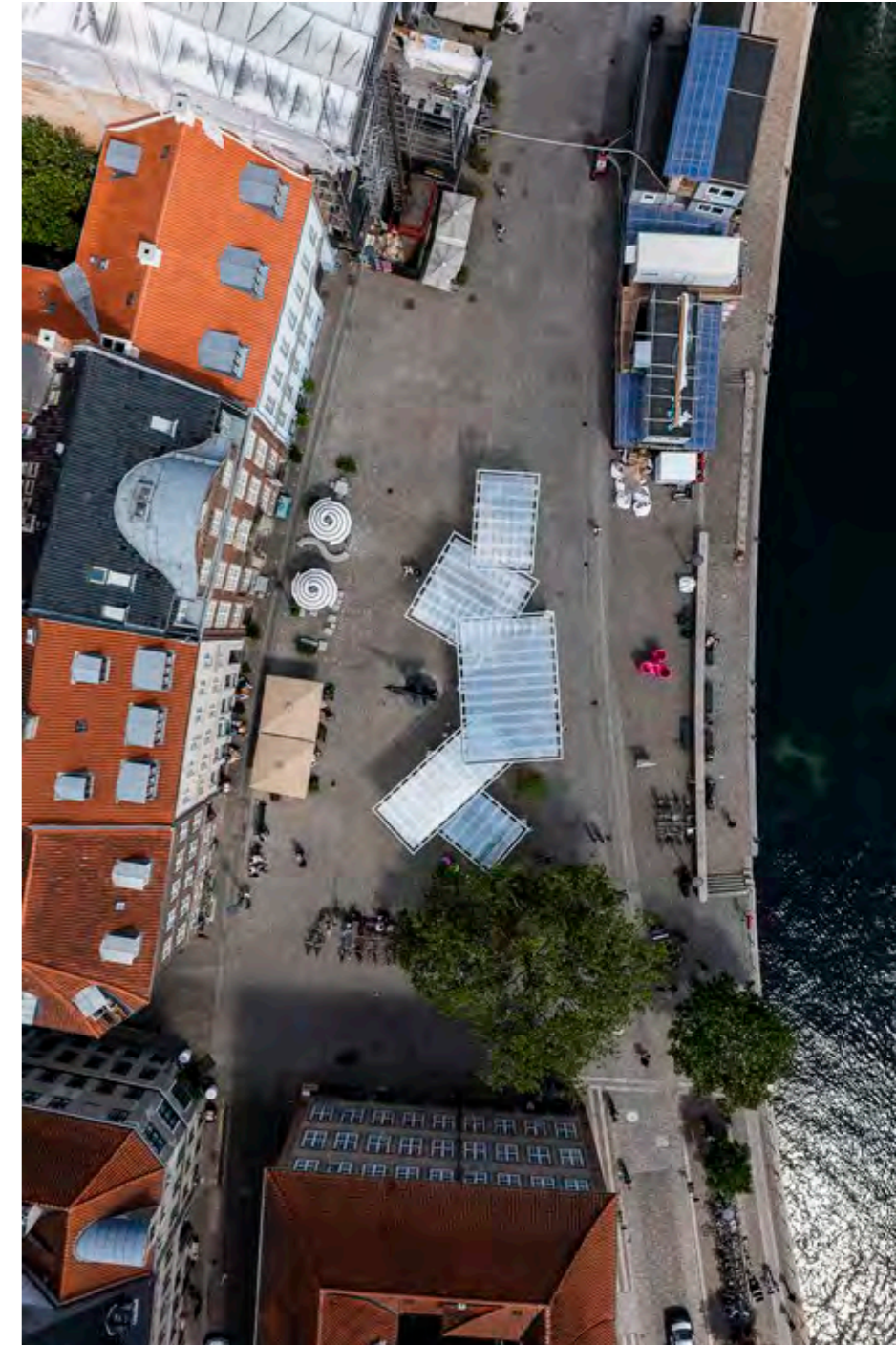
PROJECT PRACTICE TEAM

Erik Rudolfsson, Design Architect

Joseph Alliker, Design Architect

Phillip Eaton, Graduate of Architecture





COMMENDATION FOR SMALL PROJECT ARCHITECTURE

PLASTIC PAVILION

by
TERROIR

Builder: Plastmontøren

Photographer: Torben Eskerod | Niels Nygaard

A poetic provocation that engages and extends the temporary pavilion typology, the Plastic Pavilion sits lightly and elegantly in this historic fishing boat harbour in Copenhagen. Providing both an eloquent public exhibition space and provocative dialogue about the sustainability of architecture and recycling of ubiquitous plastics, its curvy 3D-printed feet, scattered frames and floating roof-elements disperse around the heritage square and statue, contrasting with the cobblestones and curvy bronze flesh, and challenging current paradigms of sustainability with a multi-layered narrative.

PROJECT PRACTICE TEAM
Gerald Reinmuth, Director
Scott Balmforth, Director
Mikkel Moller Roesdahl, Project Lead
Ieva Valskyte, Graduate of Architecture

PROJECT CONSULTANT AND CONSTRUCTION TEAM
Fiberline Building Profiles, Manufacturer
NordiQ Group A/S, Client Advisor
Vink Plast ApS, Manufacturer



WILLIAM J MITCHELL PRIZE

MARK BURRY AO

Established in 2012, The William J. Mitchell International Chapter Prize is awarded in recognition of a significant contribution to architecture. It is primarily intended to enhance the profile of Australian architecture internationally and the profile and career of the winner.

Mark Burry AO, is the Founding Director for Swinburne University of Technology's 'Smart Cities Research Institute', where he leads the development of a whole-of-university research approach to helping ensure that our future cities anticipate and meet the needs of all citizens.

A practising architect Mark has published internationally focusing on two main themes: putting theory into practice with regard to procuring 'challenging' architecture, and the life, work and theories of the architect Antoni Gaudí.

As the Senior Architect to the Sagrada Família Basilica Foundation since 1979, he has pioneered collaboration with his colleagues and untangling the mysteries of Gaudí's compositional strategies for his greatest work, based on-site in Barcelona.

Mark holds various senior positions at academic institutions in Europe, New Zealand and Australia, is a member of the Advisory Board of Gehry Technologies in Los Angeles, was a member of the Australian Research Council College of Experts [2003 – 2007], and the Australian Institute of Architects National Education Committee (2001– 2005) and is presently the Chair of the Research Leaders Group of the Australasian CRC for Interaction Design.

In 2001, Mark founded the Spatial Information Architecture Laboratory (SIAL) at RMIT University before establishing the Design Research Institute (DRI) in 2008. He held an ARC funded Federation Fellowship in 'Complex Architecture and Convergent Design' from 2007 to 2012. In 2014 he joined the University of Melbourne as Professor of Urban Futures at the Faculty of Architecture, Building and Planning, where he helped develop the Faculty's capacity to consolidate research in urban futures, drawing together and augmenting expertise in urban visualisation, urban analytics, and urban policy.

Mark has been a visiting professor at University of Liverpool, the Massachusetts Institute of Technology, the Universitat Politècnica de Catalunya and Victoria University of Wellington. He has collaborated with Gehry Partners LLP, dECOi Paris, Foster and Partners and Arup and was a member of the Prime Minister's Science, Engineering and Innovation Council in 2005 as part of the working group examining the role of creativity in the innovation economy.

Mark's significant global contributions to the architectural profession makes him a very worthy recipient of the 2024 William J. Mitchell Prize.

International Chapter Architecture Awards Gallery



COMMERCIAL ARCHITECTURE
The Embassy of Australia, Washington D.C.
Bates Smart
Photographer: Joe Fletcher



COMMERCIAL ARCHITECTURE
Je ne sais quoi Villas
EMKC3
Photographer: Peter Bennetts



INTERIOR ARCHITECTURE
The Embassy of Australia, Washington D.C.
Bates Smart
Photographer: Joe Fletcher



INTERIOR ARCHITECTURE
Lu Style - Shanghai
Schin Architects with Atelier W
Photographer: Chiara Ye Photography



PUBLIC ARCHITECTURE
The Embassy of Australia, Washington D.C.
Bates Smart
Photographer: Joe Fletcher



PUBLIC ARCHITECTURE
Kimbe Market Redevelopment
PAWA Architecture
Photographer: MANAS



PUBLIC ARCHITECTURE
Acticity Centre for Dance and Movement-based Arts
Gall and Associates - Gall és Társai Építésziroda
Photographer: Balazs Danyi



RESIDENTIAL ARCHITECTURE HOUSES - NEW
Långhus
RAAarchitects Pty Ltd
Photographer: Erik Lefvander



SMALL PROJECT
Plastic Pavilion
TERROIR
Photographer: Torben Eskerod

INTERNATIONAL
ARCHITECTURE
AWARDS 2024
CHAPTER

 Australian
Institute of
Architects

