

INTERNATIONAL CHAPTER  
ARCHITECTURE AWARDS 2024



Australian  
Institute of  
Architects

## President's Message



Justin Hill LFRAIA, MSIA  
Chair, International Chapter  
Australian Institute of Architects

This is a landmark year for the Australian Institute of Architects Chapter Awards, because for the first time two Chapters are holding a combined Awards ceremony: the Tasmanian Chapter and the International Chapter; one celebrating outstanding Tasmanian projects, the other celebrating the most noted projects completed overseas by any Institute member. On behalf of the Council of the International Chapter, I would like to express our gratitude for this opportunity, to our eminent jury members, and to all the architects who entered their projects. A special thanks also to our remarkable professional staff in Hobart who have been responsible for making this event happen.

Having worked overseas for the last 40 years, I have often noticed how challenging it can be to deliver a building of great quality in diverse locations where sometimes the spoken language, regulatory environment or expectations often differ from those we are more familiar with in Australia, or wherever an architect's studio is located. But our members have proven in these awards that the highest quality does prevail, regardless of where that may be in the world. That quality is something to be very proud of and to celebrate here in Hobart this week. Congratulations, all.

## Jury Chair Message



Samantha Cotterell, FRAIA  
Jury Chair, 2024 International  
Chapter Architecture Awards

In my role as Jury Chair, I have been astounded to witness the exquisite architectural responses and the many stories that have emerged from the projects in our awards programme this year.

My fellow jury members and I have had the honour and pleasure to observe how Australian spatial and architectural concepts translate to projects in distant lands. We were shown the childhood memories of family summers in Sweden, a city in Hungary that was reinvigorated by the renovation of a heritage building, a town in Papua New Guinea where the refurbishment of a market place revitalised what was an unsafe place for women, and the diplomatic quarters of Washington DC, where the architects have created a masterpiece that stands as a proud and creative representation of Australia, its values, and its unique natural environment. It is testament to the Australian spirit and to our education in architecture that each project carries with it its own version of Australian identity.

Awarding the International Chapter prizes can be challenging because the contexts of the projects are so diverse, but common among them is the way architecture contributes to the development of current thinking about life as much as about the built environment.

In addition to the established programme, it is our great pleasure and honour this year to award the first iteration of the Louise Cox Award.

It is a thrilling moment for the International Chapter when the Awards cycle comes around. It offers the opportunity to see through the eyes and appreciate the talents of our members practicing across the globe. The projects presented here are not just about architecture; they are also the stories of architects who have chosen a working life that contributes to foreign contexts and communities, stories of other cultures and geographies, and stories of the challenges and successes in our profession beyond our borders.

## William J Mitchell Prize

### MARK BURRY AO

Established in 2012, The William J. Mitchell International Chapter Prize is awarded in recognition of a significant contribution to architecture. It is primarily intended to enhance the profile of Australian architecture internationally and the profile and career of the winner.

Mark Burry AO is the Founding Director of Swinburne University of Technology's 'Smart Cities Research Institute', where he leads the development of a whole-of-university research approach to ensure our future cities anticipate and meet the needs of all citizens.

A practising architect, Mark has published internationally focusing on two main themes: putting theory into practice with regard to procuring 'challenging' architecture, and the life, work and theories of the architect Antoni Gaudí. As the Senior Architect to the Sagrada Família Basilica Foundation since 1979, he has focused on untangling the mysteries of Gaudí's compositional strategies for his greatest work.

Mark holds various senior positions at academic institutions in Europe, New Zealand and Australia, and is a member of the Advisory Board of Gehry Technologies in Los Angeles. He was also a member of the Australian Research Council College of Experts (2003-2007), and the Australian Institute of Architects National Education Committee (2001-2005), and is presently the Chair of the Research Leaders Group of the Australasian CRC for Interaction Design.

In 2001, Mark founded the Spatial Information Architecture Laboratory (SIAL) at RMIT University before establishing the Design Research Institute (DRI) in 2008. As well as holding an ARC-funded Federation Fellowship, in 2014 he joined the University of Melbourne as Professor of Urban Futures at the Faculty of Architecture, Building and Planning, where he helped develop the faculty's capacity to consolidate research in urban futures.

Mark's significant global contributions to the architectural profession make him a very worthy recipient of the 2024 William J. Mitchell Prize.



Cover image: Award winner - The Embassy of Australia, Washington D.C. by Bates Smart  
Photographer: Joe Fletcher

AWARD FOR  
COMMERCIAL  
ARCHITECTURE



Photographer - Joe Fletcher

## Commercial Architecture

### The Embassy of Australia, Washington D.C.

#### BATES SMART

The new Australian Embassy in Washington sits confidently on its site in Massachusetts Ave; an exemplar of refined and innovative commercial architecture that offers up to Washington subtle colours of the Australian landscape.

The built form maximises the permissible building envelope, yet allows for a Tarkine-inspired sunken garden at the south-west corner.

Security and circulation routes are rigorously streamlined, while Australian artists are quietly championed, with striking commissions for bespoke furniture, art and textiles, organised through a collaboration with the DIA, all of which characterises the project as distinctly Australian.

#### BUILDER

Clark Constructions

#### PROJECT PRACTICE TEAM

See [architecture.com.au](http://architecture.com.au) for full credits.

#### PROJECT CONSULTANT/CONSTRUCTION TEAM

KCCT, Role US Architect of Record  
Jacobs, Project Manager  
Aurecon (Australia), Structural Engineer, Services Consultant, ESD Consultant, Hydraulic Consultant, Civil Consultant, Facade Engineer, Electrical Consultant, Vertical Transport, Fire Services, AV Consultant, Fire Engineering, Acoustic Consultant  
SGH (US), Structural Engineer & Facade Engineer Interface (US), Services Consultant, Hydraulic Consultant, Electrical Consultant, Vertical Transport, AV Consultant  
Arup (US), ESD Consultant, Fire Engineering, Acoustic Consultant  
Sorba (US), Civil Consultant  
Wiles Mensch (US), Landscape Consultant  
RLB, Quantity Surveyor  
Wells & Associates (US), Traffic Consultant  
Studio Ongarato, Graphics / Signage

AWARD FOR  
INTERIOR  
ARCHITECTURE



Photographer - Joe Fletcher

## Interior Architecture

### The Embassy of Australia, Washington D.C.

#### BATES SMART

The Embassy interior successfully promotes openness and transparency whilst also skilfully addressing the pragmatic issues of security and restricted access required of buildings of this nature.

The architects have abstracted the Australian landscape in the use of textures and striated native timbers. These interiors comprise the elegant use of Australian materials and a refined and restrained palette. The sophisticated level of craftsmanship and detailing is accompanied by Australian furniture, including Indigenous design in art and rugs that highlight Australian creative excellence.

Australia's new Embassy is both functional and delightful; its expansive and generous light-filled interiors are unashamedly grand but also warm and intimate, showcasing Australia at its modern, vibrant, and welcoming best.

#### BUILDER

Clark Constructions

#### PROJECT PRACTICE TEAM

See [architecture.com.au](http://architecture.com.au) for full credits.

#### PROJECT CONSULTANT/CONSTRUCTION TEAM

KCCT, Role US Architect of Record  
Jacobs, Project Manager  
Aurecon (Australia), Structural Engineer, Services Consultant, ESD Consultant, Hydraulic Consultant, Civil Consultant, Facade Engineer, Electrical Consultant, Vertical Transport, Fire Services, AV Consultant, Fire Engineering, Acoustic Consultant  
SGH (US), Structural Engineer & Facade Engineer Interface (US), Services Consultant, Hydraulic Consultant, Electrical Consultant, Vertical Transport, AV Consultant  
Arup (US), ESD Consultant, Fire Engineering, Acoustic Consultant  
Sorba (US), Civil Consultant  
Wiles Mensch (US), Landscape Consultant  
RLB, Quantity Surveyor  
Wells & Associates (US), Traffic Consultant  
Studio Ongarato, Graphics / Signage

# Public Architecture

## The Embassy of Australia, Washington D.C.

### BATES SMART

This design bravely eschews monumentality and excessive deference to its eminent Washington DC surroundings in order to paint a compelling picture of Australia as a vibrant, inviting, and youthful country.

The project responds skilfully to a complex brief, which called for a place that was at once highly secure whilst also open and welcoming.

References to the Australian landscape are unmistakable, from the gleaming copper and glass façade recalling expansive skies and red earth, to the layered interior panelling echoing the peeling bark of a eucalypt forest. Works by Australian artists and makers bring a depth of colour, detail, and texture with a strong sense of belonging to the building.

### BUILDER

Clark Constructions

### PROJECT PRACTICE TEAM

See [architecture.com.au](http://architecture.com.au) for full credits.

### PROJECT CONSULTANT/CONSTRUCTION TEAM

KCCT, Role US Architect of Record  
Jacobs, Project Manager  
Aurecon (Australia), Structural Engineer, Services Consultant, ESD Consultant, Hydraulic Consultant, Civil Consultant, Facade Engineer, Electrical Consultant, Vertical Transport, Fire Services, AV Consultant, Fire Engineering, Acoustic Consultant  
SGH (US), Structural Engineer & Facade Engineer  
Interface (US), Services Consultant, Hydraulic Consultant, Electrical Consultant, Vertical Transport, AV Consultant  
Arup (US), ESD Consultant, Fire Engineering, Acoustic Consultant  
Sorba (US), Civil Consultant  
Wiles Mensch (US), Landscape Consultant  
RLB, Quantity Surveyor  
Wells & Associates (US), Traffic Consultant  
Studio Ongarato, Graphics / Signage



Photographer – Joe Fletcher

## Acticity Centre for Dance and Movement-based Arts

### GALL AND ASSOCIATES - GALL ÉS TÁRSAI ÉPÍTÉSZIRODA

Veszprem's new Dance Centre has been skilfully integrated into its surrounding context as a new vibrant cultural hub. The architects took an uninspiring collection of buildings and addressed a complicated brief with rigorous aplomb. They confidently addressed many challenging issues, including urban design and connectivity, the creation of new public space, as well as heritage, restoration, and sustainability.

With a refined plan and section, and a controlled palette of materials, a well-considered community facility has been achieved.

This new amenity has revitalised a derelict brown field site and threaded it back into the city fabric in a fine example of placemaking and urban healing.

### BUILDER

Veszprémbér KFT - Vemévszer KFT Concorcium

### PROJECT PRACTICE TEAM

Anthony Gall, Design Architect  
Lili Kovacs, Project Team  
Eszter Gall, Graduate

### PROJECT CONSULTANT/CONSTRUCTION TEAM

I-Quadrat KFT, Structural Engineer



Photographer – Balázs Danyi

## Kimbe Market Redevelopment

### PAWA ARCHITECTURE

This design has delivered a simple and elegant building that is clearly having a hugely positive impact on the lives of its many users. Improving safety for the (mostly female) market traders was a key objective. This informed the provision of separate entrance zones for vendors, on-site banking, and an open plan that promotes passive surveillance. The market is naturally breezy, beneath a lofty steel roof that echoes the form of the existing buildings and creates a welcoming civic presence.

#### TRADITIONAL LAND OWNERS

West New Britain has seven major tribes, the Nakanai, Bakovi, Kove, Unea, Maleu, Kaulong and Arowe

#### BUILDER

Minpac Construction

See [architecture.com.au](http://architecture.com.au) for full credits.



COMMENDATION  
FOR PUBLIC  
ARCHITECTURE

Photographer – Manas Photography

## Residential Architecture – Houses (New)

### Långhus

#### RAAARCHITECTS PTY LTD

Conceived as an elegant steel-wrapped meditation on the Swedish vernacular, this rigorously detailed summerhouse on the Swedish west coast responds to themes of memory, landscape, and connection to place. Conforming to a strict set of criteria aimed at protecting the ecologically sensitive wetlands and nearby fjord, the façade, compact formal geometries, and materiality sit in harmony with the

woodland setting, weaving a narrative of a childhood growing up nearby with a nuanced understanding of designing for the seasons.

#### BUILDER

Totalbyggen Vast

See [architecture.com.au](http://architecture.com.au) for full credits.



COMMENDATION  
FOR  
RESIDENTIAL  
ARCHITECTURE  
– HOUSES (NEW)

Photographer – Erik Lefvander

## Small Project Architecture

### Plastic Pavilion

#### TERROIR

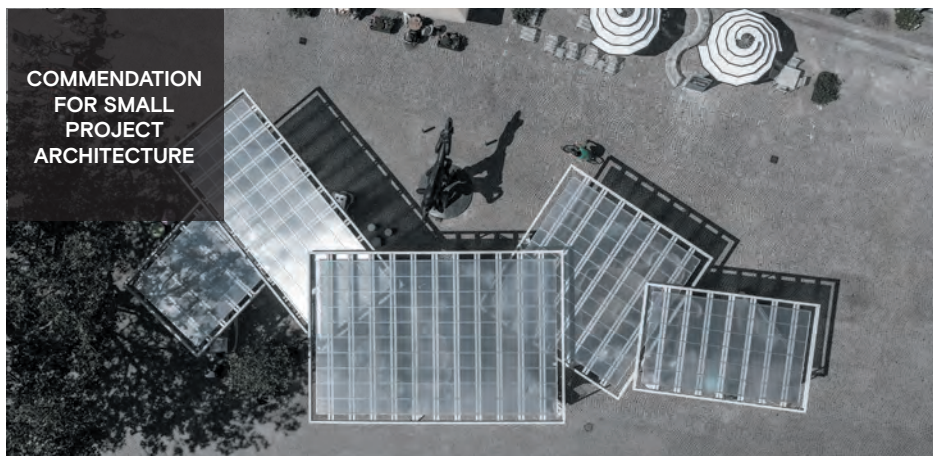
A poetic provocation that engages and extends the temporary pavilion typology, the Plastic Pavilion sits lightly amid the historic fishing boat harbour in Copenhagen. Providing both an eloquent public exhibition space and provocative dialogue about the sustainability of architecture and recycling of ubiquitous plastics, its curvy 3D-printed feet, scattered frames and floating roof-elements disperse around the heritage square and

statue, contrasting with the cobblestones and curvy bronze flesh, and challenging current paradigms of sustainability with a multi-layered narrative.

#### BUILDER

Plastmontøren

See [architecture.com.au](http://architecture.com.au) for full credits.



COMMENDATION  
FOR SMALL  
PROJECT  
ARCHITECTURE

Photographer – Torben Eskerod

## Awards Jurors

### International Chapter Architecture Awards Jury

Samantha Cotterell, FRAIA, Jury Chair  
Tim Bradley, RAIA  
Kate McMahon, RAIA  
Peter Kirkness, RAIA  
Antonia Syme, AM

### William J Mitchell Prize Jury

International Chapter Council

INTERNATIONAL  
CHAPTER  
ARCHITECTURE  
AWARDS  
2024