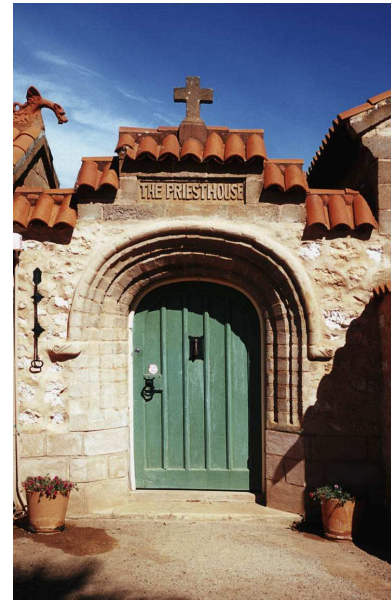


The Priesthouse, Mullewa

Address cnr Bowes & Doney Streets, Mullewa, WA 6630
Practice Monsignor John Cyril Hawes (1876-1956)
Designed 1927 Completed 1930

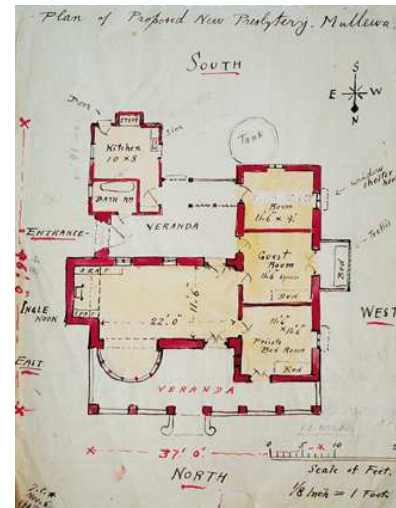
History & Description Monsignor John Cyril Hawes designed the Priesthouse for himself once he had completed the adjacent Church of Our Lady of Mount Carmel, in 1927. Built of local stone with hand-made concrete blocks forming corners, reveals and mouldings; all capped by terra-cotta roof tiles, building has a beautiful rough and rustic character. There is a continual wealth of detail as one moves through the entry and into the principal living hall, complete with a colourful semi-circular bay window, fireplace recess, and inglenook. It was built by skilled artisans responsible for many of the fine detailing. The eclectic, yet well-resolved external style includes a Romanesque arcade across the north elevation, and a Spanish Mission gable. Hawes also designed the furniture.



Sculpted entry doorway 2003 (courtesy John Taylor).

Statement of Significance The Priesthouse is an outstanding example of eclectic architectural and the style of Monsignor John Hawes, whose life and works as an ecclesiastical architect are of international renown. The Priesthouse has a high degree of artistic and technical sophistication, both internally and externally, and exhibits a well resolved combination of architectural, symbolic and artistic motifs. The Priesthouse is an example of the combination of Hawes' design principles with his personal involvement, at every level, in the construction and subsequent use, as a priest, of the building.

Criteria Applicable N1. Significant heritage value in demonstrating the principal characteristics of a particular class or period of design
N2. Significant heritage value in exhibiting particular aesthetic characteristics
N5. Having a special association with the life or works of an architect of significant importance in our history



Hawes' sketch plan of Priesthouse dated 6 November 1927 (courtesy Diocese of Geraldton).



Eastern façade of the Priesthouse facing Bowes Street, 1995 (courtesy John Taylor)



Living Hall of the Priesthouse, August 1931 (courtesy Tony Harvey).