

Viney House

Revised 16.04.2010

Address 2 enterprise road, Sandy Bay, Tasmania
Practice Michael Viney
Designed 1975

History & description Designed and built by the architect for his family, this small (167m²) house on two levels is a simple, longitudinal container situated on the edges of a hilly, bushland reserve overlooking Sandy Bay and the River Derwent.

Constructed on a masonry podium that extends to form outdoor spaces, the steel structure and light timber framing have allowed an expressive articulation of the internal form and space as well as the free location and extent of external openings. Painted white, the building is contrasted against the native bush surroundings. The three bedroom house is accessed via an elevated walkway which then proceeds to form a gallery access for bedrooms on the upper level while opening to the living spaces on the floor below.

The plan is organised as a sequence of specific horizontal relationships to the distant reference points of mountain and river views, while vertical relationships are contained within the two storey void. The main bedroom is totally enclosed except for a large, central rooflight providing a connection to sky.

Outdoor spaces are raised on the podium further reinforcing the axial engagement with specific vistas.

Statement of significance Mike Viney was a member of the architectural firm Heffernan, Nation, Rees and Viney who became well known for their consistent design approach that emulated the 'New York Five'. While the correlation of a 'white' architecture exploring the work of Le Corbusier is acknowledged, the group's concerns were particularly local and related to specific landscape.

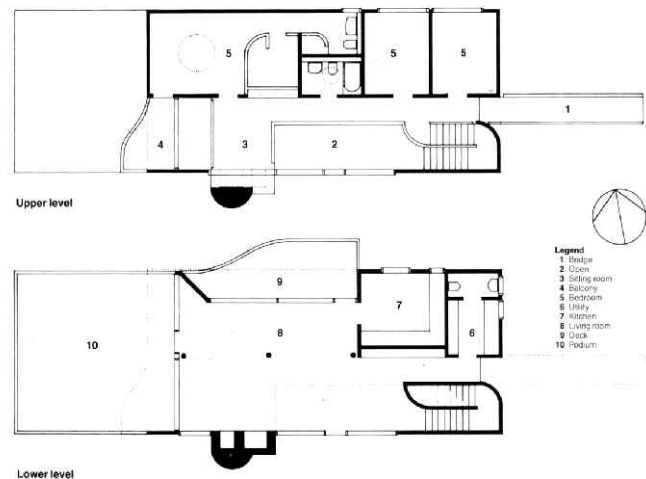
Mike Viney's contribution was highly theoretical, derived from an appreciation of Japanese architecture and resulted in a carefully controlled architecture. The building is created by the application of ordering devices that initially form a distinct separation with landscape that allowed Viney to architecturally control the re-engagement.

The Viney House is perhaps considered to be the best example of this architectural development and represents a highly refined critical approach to adopting international references that are transformed to the local landscape.



Exterior view from west

Photographs - Michael Viney



Floor Plans

- Criteria applicable
- N1 Significant heritage value in demonstrating the principal characteristics of a particular class or period of design.
 - N2 Significant heritage value in exhibiting particular aesthetic characteristics.
 - N3 Significant heritage value in establishing a high degree of creative achievement.



Entry Ramp



Interior view from stair overlooking dining & living areas