

McNeill Holiday House

Revised 16.04.2010

Address Nebraska Beach, Bruny Island Tasmania
 Practice Barry McNeill, Architect
 Designed Early 1980's Completed Late 1990's

History & description Prior to retiring from full time practice Barry McNeill designed a retirement home for himself and his extended family on a sloping north-west lot above Nebraska Beach, Bruny Island, south of Hobart.

Built by himself from timber milled on the island, (pinus radiata), four differently scaled buildings combine to form the whole. The reductionist approach evident in the design and assembling of his timber framed institutional buildings, especially schools, is also evident in his residential architecture. Place based considerations of light, landscape and local climate underpin architectural outcomes. Massing reflects function with each building stepping with the landform. External spaces are formed through individual building juxtaposition, beginning with platform and roof, with solid wall elements placed where openness is not desired or possible. Rigorous adherence to the (manufactured) dimension of materials, a rational approach to construction (with glass beaded directly into the post and beam structure), use of sustainable materials, compact dimensions to functional space, (with no dedicated circulation spaces), and a systems approach to building identify the complex, sited to take advantage of its island prospects.

Statement of significance The buildings are a significant example of the domestic designs of a prominent architect and educator Barry McNeill, particularly as it distils, at the end of his career, his influential architectural and educational values. (Criteria N5)

The building complex is a material expression of McNeill's design philosophy in its approach to the use of materials, the building system employed, its site planning and in its owner built construction, an expression of 'learning by doing'. (Criteria N2)

The complex is significant as an example of a regional (Tasmanian) approach where individual buildings elements are configured to create protected external spaces ('in the sun but out of the wind'), through the buildings timber post and beam construction, and through its landform response where buildings step with the site while reorienting the viewer. (Criteria N3)

Criteria applicable N 2 Significant heritage value in exhibiting particular aesthetic characteristics.

N 3 Significant heritage value in establishing a high degree of creative achievement.

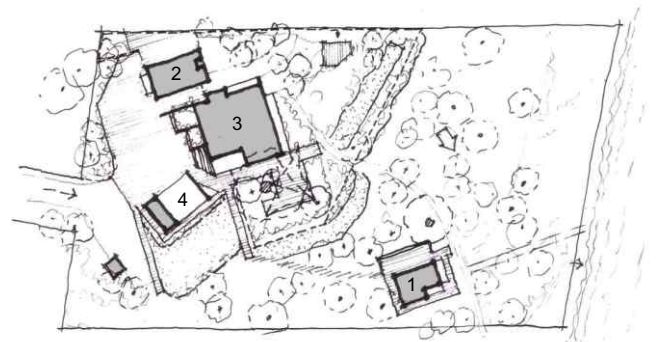
N 5 Having a special association with the life or works of an architect of significant importance in our history.



Characteristic timber framed post and beam construction



The boat house - The first of four buildings in the complex



Site Plan: 1 Boatshed, 2 Studio, 3 Cottage, 4 Carport



Buildings frame space, studio(2) and cottage(3)



Boathouse detail

photography: Leigh Woolley