

## Clarke House

Address 12 Morgan St, Ascot Brisbane, Q

Practice Christopher Clarke

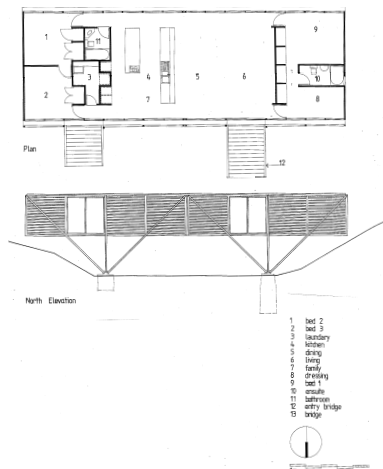
Designed 1984 Completed 1985

**History & Description** After studying in Brisbane architect, Chris Clarke spent 14 years in England. It was his time with Norman Foster which influenced the crisp high tech image of this house, built as his own. The structure, in the form of a steel truss "bridge" was supported on only four piers and spans across a gully on the south side of a steep slope. The two long walls of the rectangular plan were fully glazed and shaded by external adjustable aluminium louvres. Unlike a bridge it does not join the ground at the ends. The house had no visible roof and end walls were clad in corrugated steel sheet. Over the entry stairs, a hinged canopy projected like an inverted drawbridge. The open planning treated the whole interior almost as a single space. The whole building was completed in 3 months.



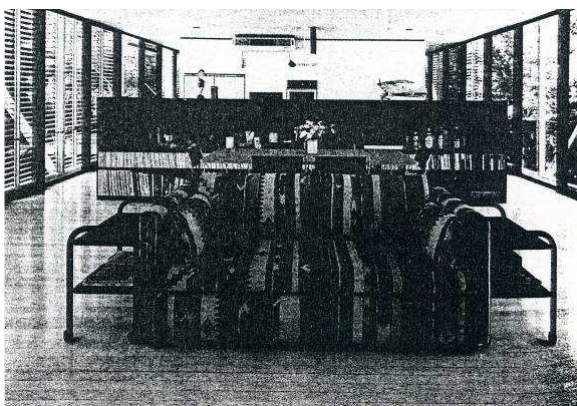
**Statement of Significance** The design and details of this structure expressed both innovation and structural efficiency. The strong geometry and its fineness have their origins not only in Britain but also within the vernacular Queensland house type with its sheltering verandah and elevated appearance. The house has a purity of concept rarely achieved in this country.

Entry on north (Ben Gapp)



**Criteria Applicable** N2 – Significant heritage value in exhibiting particular aesthetic characteristics.  
N3 – Significant heritage value in establishing a high degree of creative achievement.  
N6 – Significant heritage value in demonstrating a high degree of technical achievement of a particular period.

Plan & Elevation



Interior



South elevation (Renaye Peters)