

## Union College, University of Qld

Address University of Qld, St Lucia, Brisbane, Qld

Practice James Birrell

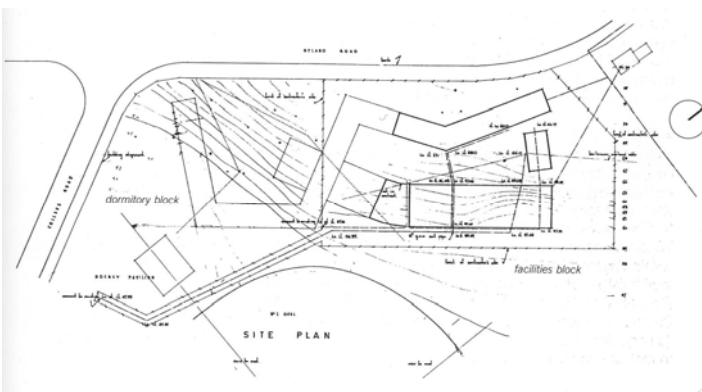
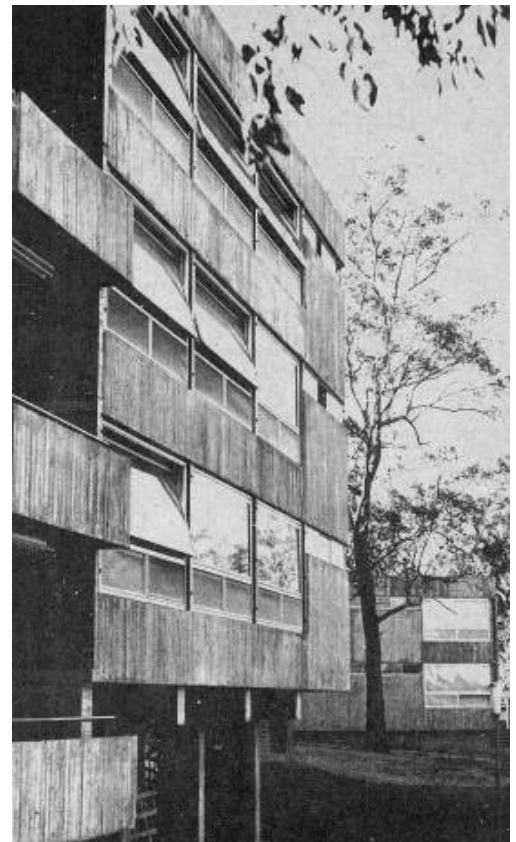
Designed 1963 Completed 1972

History & Description Union College was designed during James Birrell's tenure as university architect at the University of Queensland (1961-7). Built in several stages, the college was a departure in several ways. It formed a group of buildings and used structural off form concrete, in a plan form which snaked around the site responding to the topography and existing trees, at the same time forming courtyards. It was the first college building on the campus to accommodate both male and female students. In the main dormitory building it used an extruded typology over 3 floors supported on columns free of the ground and was identified by large 'train carriage' room size pivoting windows of double glazing containing venetian blinds in a bold high tech solution of natural ventilation. The facilities block is single story and faces the northeast, using local bluestone between a concrete frame. Other parts were infilled with dark manganese brick between raw concrete columns.



Statement of Significance This building is considered one of the finest of its period and is one of a group of exceptional designs by Birrell on the St Lucia campus.

Criteria Applicable N\*.-



Photos: R Stringer (Birrell work), Scarab 1965; site plan (Birrell work from the office)