

Masel house

Address High Street, Stanthorpe, Q. 4380

Practice Donoghue & Fulton

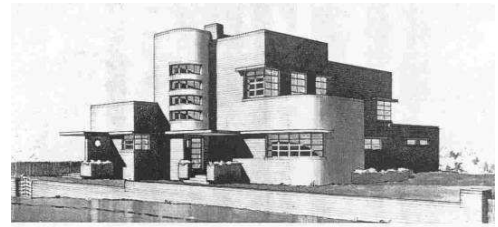
Designed 1936 Completed 1938

History & Description The two-storey brick house and doctor's surgery was built in 1937-8 for Dr Harry and Mrs Una Masel on the main street of Stanthorpe. Designed by architect CWT (Charles) Fulton and constructed by Sydney builders Kell & Rigby, it is an excellent example of the Inter-War Functionalist style of architecture incorporating typical features such as asymmetrical cubic massing, expanses of undecorated brick walls, steel corner and strip windows, curved brickwork corners, flat cantilevered awnings and a concealed roof. It is one of the earliest examples of modern architecture in Queensland. The house was published in national architecture journals; in *Building* (1937) and in *Architecture* (1940) and was the joint winner of Qlds' inaugural award for Meritorious Architecture. The house and its garden setting are highly intact.

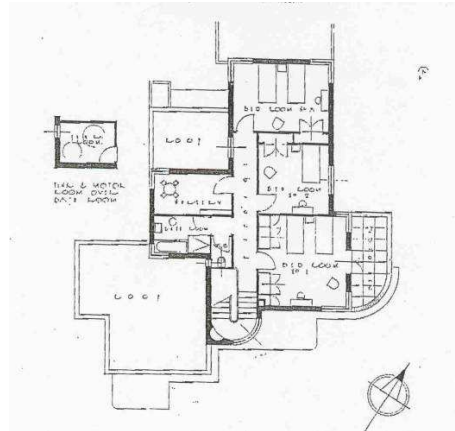
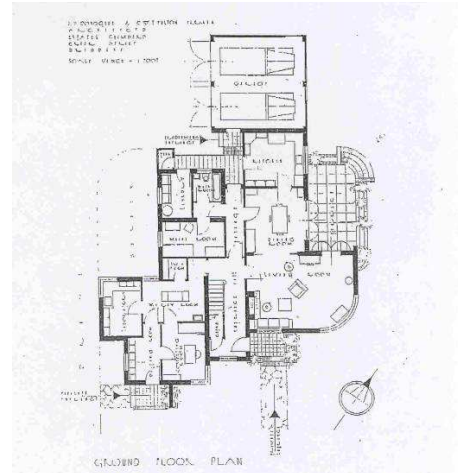
CWT (Charles) Fulton (1906-1988) was born and studied in Sydney. In 1931-2 he worked in London and travelled in Europe settling in Brisbane in 1933. The firm of Donoghue & Fulton was formed in 1937. Following its dissolution after the war, Fulton formed a partnership with JM Collin. Both practices were particularly known for their institutional work, including a number of innovative hospitals, although Fulton also designed a handful of modern houses, including his own in Taringa, Brisbane. Fulton's role as an important teacher of architecture for over 30 years is recognised in the naming of the QUT architectural school as the Charles Fulton School of Architecture.

Statement of Significance The house is a striking and very intact example of the interwar functionalist style. With its rationally zoned planning and abstract monumental facades, the house demonstrates the strong influence of European modernist architecture and was one of the first Queensland examples of these trends introducing many features of the new and influential architectural vocabulary to the state. Its architect, CWT Fulton is regarded as a key practitioner and teacher of modern trends in architectural design in Queensland during the 30s and 40s. The house is also considered a fine example of a residence which accommodates both domestic and professional or business usage and is a modernist beacon within an otherwise more traditional country townscape.

Criteria Applicable N1. Significant heritage value in demonstrating the principal characteristics of a particular class of period of design.
N2 – Significant heritage value in exhibiting particular aesthetic characteristics.



DOCTOR'S RESIDENCE, STANTHORPE, QUEENSLAND
Architects: J. P. Donoghue and C. W. T. Fulton, Brisbane



Images: *Building* Dec 1937; *Architecture* 1940; Dept Environment & Resource Management Q 2004.

