

Council House

Address 27-29 St Georges Terrace, Perth

Practice Howlett and Bailey

Designed 1960 Completed 1963

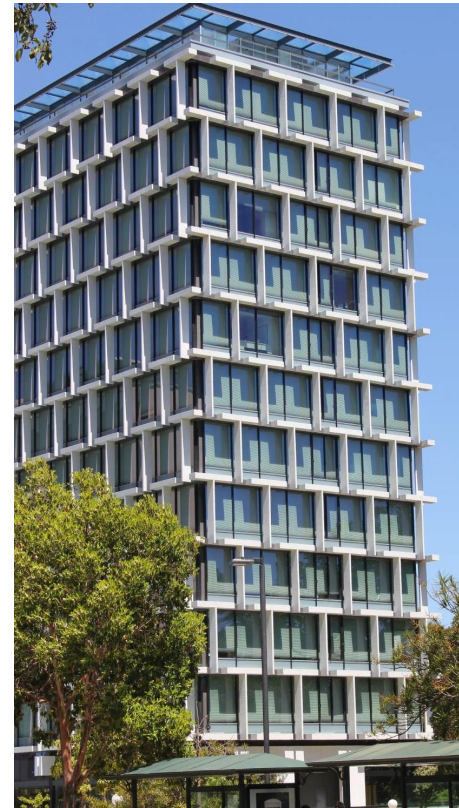
History & Description The design of the 12 storey office building was the result of an international competition. The winning design, chosen from 61 entries, by Jeffrey Howlett & Don Bailey from the Melbourne architectural firm Bates, Smart and McCutcheon introduced to Perth both a new level of purity in architectural design & a consistency of minimalist detailing. The building was to be completed for the VII British Empire & Commonwealth Games, to epitomize the forward-looking aspirations of the Perth community.

Surrounded by formal gardens on three sides & the mid-19C Government House to the east the steel framed building's fully glazed façade incorporated internal blinds & external vertical & horizontal sunshades, coated with fine mosaic tiles, configured in a %%% pattern across the facades to control solar heat gain. The services & lifts are at the eastern end & the stairwell at the western end of the narrow floor plate. The reduction of structural mass & the refinement of details resulted in a transparent glass box unlike any other earlier office building in Perth. The uninterrupted floor-to-ceiling glazing introduced a degree of transparency previously unseen in commercial office buildings in Western Australia. The level nine circular council chamber featured well detailed wood panelling.

The building is an architectural landmark in the streetscape of St George's Terrace, the City's main business street. The building was refurbished, including an additional level, by Peter Hunt and Daryl Jackson Architects in the 1990s.

Howlett & Bailey Architects was founded after they won the council house competition. Donald Campbell Rupert Bailey was awarded the RIAA Gold Medal in 1991. Howlett was nominated a Member of the Order of Australia in 2000 for his contribution to architecture.

Statement of Significance The modern architecture of Council House, with its cubic form & large areas of glazing protected by patterned sunshades, represents a major change in aesthetics from the previous architectural styles adopted for the CBD of Perth. Jeffrey Howlett & Donald Bailey are notable Australian architects & this is an important early work.



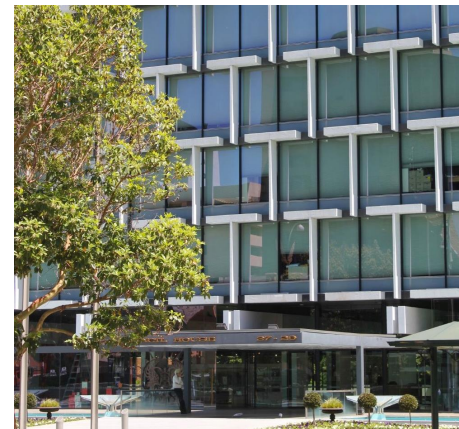
View from the NW.



Façade detail.



Philip Griffiths Architects 2010



View from St Georges Terrace. Source of photos: Philip Griffiths Architects, 2010

Criteria Applicable **N2.** Significant heritage value in exhibiting particular aesthetic characteristics
N5. Having a special association with the life or works of an architect of significant importance in our history