

## Moir House

Address 43 Melbourne Avenue, FORREST, ACT

Practice Malcolm Moir

Designed 1935 Completed 1937

### History & Description

The four bedroom house has a stepped, multi-level plan with the entry slightly off centre. The front terrace is partially covered over by a concrete roof hood, which extends across the front of the lounge room and up to the dining room. The windows are steel framed. The front door opens into a small entry lobby on the main level with the lounge room on the right and a hall extending to the bedrooms and bathroom located at the rear of the main level. The lounge room has a large corner window with built-in furniture designed by Moir. The dining room furniture and most fittings were also designed by Moir. The lower level to the south originally contained maid's quarters and the garage. The roof top terrace was enclosed in the early 1950s which extends up to the underside of the roof without any eaves overhang.

The mid-level was used as the architects' office and has both internal and external access. Externally access was from an expressed open tread concrete stair.

### Statement of Significance

The Moir House is Canberra's finest example of the inter-war functionalist style. Malcolm Moir is recognised as one of Canberra's leading architects of the middle period of the twentieth century. The design of this house as his own residence and later use as his office and residence further enhances its significance.

### Criteria Applicable

N1. Significant heritage value in demonstrating the principal characteristics of a particular class or period of design.

N2. Significant heritage value in exhibiting particular aesthetic characteristics.

N3. Significant heritage value in establishing a high degree of creative achievement.

N5. Having a special association with the life and works of an architect of significant importance in our history.

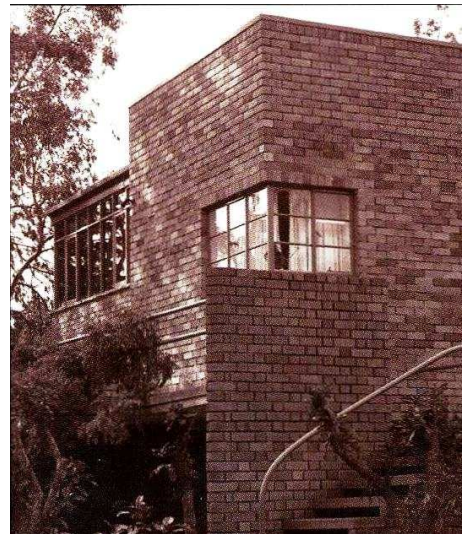


Photo: Unknown



Photo: Unknown



Photo: Graeme Trickett



Photo: Jon Burchill